



RIDER
UNIVERSITY

Pursue
your

passion





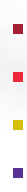
Discover
your perfect
next
step.





#21
**Most Innovative
School**
*(U.S. News & World Report,
2019)*

#2
**Leadership development
program in the country**
(HR.com, 2018)





Let your ambition take the reins.

NO MATTER WHERE you are in your journey as a transfer student, Rider will encourage and guide you as you continue to pursue your passions. Whether you have a plan in mind or are looking to explore new interests, we're here to help you accomplish your wildest dreams.



This is
the place

280
ACRES

to wander, discover and
learn by heart (including
a 2.7-acre lake!)

to find



your place.





1 IN 4 STUDENTS
is first-generation to college, so
everyone can feel at home here

3,630
undergraduates
(that's a lot of new friends)

Broncs
journey from:

36 STATES

2 U.S. TERRITORIES

53 COUNTRIES

Our home may be in central New Jersey, but on a grander scale, it's central to so much more.

The Rider campus is just a train ride from Philadelphia and New York City and only an hour drive to the beach.

Settle in! We offer guaranteed on-campus housing and free parking for transfer students.



PTK Transfer Honor Roll

Rider is one of just a select few schools recognized by Phi Theta Kappa Honor Society for its commitment to support transfer students.

Get credit for your work!

We offer free, unofficial credit evaluations before you even apply.

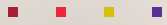
Guaranteed Transfer

We partner with most regional community colleges to simplify your transfer to Rider.

See a complete listing at:

RIDER.EDU/TRANSFER

Learning
doesn't
happen the
same way
for all of us.



And it
definitely
doesn't
happen all
in one place.

OUR ENGAGED LEARNING

Program gives you the opportunity to be captivated and motivated by eye-opening, life-changing experiences in nearby communities and all over the world. Together, the six pillars of the program will create a meaningful education that is uniquely yours.





Biology professor
Dr. James Riggs
works alongside
research students
to learn about
immunology and
microbiology.



11:1

student-to-faculty ratio

Engaged Learning in Action

See how students changed their future by transferring to Rider

» Service

Brianna Zielinski '17, Global Supply Chain Management

served on the board of Phi Beta Lambda where she raised money for the American Red Cross and organized a seminar to educate the campus community on heart healthy practices. Brianna is currently the North America Category Buyer for HR at Sanofi.

» Collaboration

Barri (Deptula) Prettyman '18, Biology further developed her passion for immunology while working with Rider faculty in labs studying the mice model for ovarian cancer. Barri earned a Master of Science in Microbiology from Thomas Jefferson University and is currently a scientist at Invivotek.

» Creative Arts

Colleen Roberts '14 Musical Theatre, B.F.A. credits Rider with landing memorable credits including the national tour of *Beauty and the Beast*, *West Side Story*, *42nd Street*, and *White Christmas*. Most recently, Colleen performed in Walnut Street Theatre's *Shrek*.



**17 STUDENTS IN THE AVERAGE RIDER CLASS,
AND NO GRADUATE TEACHING ASSISTANTS,
SO YOUR PROFESSORS WILL ALWAYS KNOW YOUR NAME**



Dr. Paul Jivoff shares his expertise on the reproductive biology of the blue crab.

94% OF FACULTY have a Ph.D. or the highest degree possible in their fields

» Global Outlook

Maria Laurenti '21, Marketing, Business Analytics (minor) developed a global perspective through her experience attending Oxford for the Oxford Innovation Intensive and through her study abroad experience in Tanzania. Maria is a Marketing Analyst for Customized Energy Solutions.

» Leadership

Valerie Scamardella '18, Elementary Education teaches 4th grade in the Howell school district. At Rider she served as the VP for both the Council for Exceptional Children (CEC) and Kappa Delta Pi (KDP), the education honor society, and was inducted into Omicron Delta Kappa (ODK), the national leadership honor society.

» Hands-On Experiences

Peter Rinaldi '20, Secondary Education, Environmental Science turned his student teaching experience and experience in the STEM scholars program into a full-time position as a Teacher of Environmental Science at Ewing High School.

100%

of Rider students complete at least one Engaged Learning experience (in fact, we require it!)

1,400

Rider students gain hands-on, professional experience each day



A closer look at our Broncs . . .

58% FEMALE

42% MALE



44% STUDENTS OF COLOR

RIDER.EDU/ENGAGED-LEARNING

Try a little
(or a lot) of
everything.



COLLEGE FRIENDSHIPS ARE LEGENDARY, and community makes us who we are. We're a vibrant, thoughtful bunch, brought here by a shared spirit of discovery. Our campus is an epicenter of year-round activities, deep-seated traditions, and diverse clubs and organizations that make Rider a wonderful place to call home.

For the Community Leader

150+ Student Organizations

Here are just a few . . .

- » Student Government Association
- » Student Entertainment Council
- » 107.7 The Bronc WRRF FM
- » Latin American Student Organization
- » Rider University Network On-Campus TV Station

The Center for Diversity & Inclusion

is a cornerstone of the University's efforts to cultivate a welcoming climate for its vibrant, diverse community.

Find out more at rider.edu/cdi

1 in 10
students

pledges our 15 fraternities
or sororities



For the Life of the Party

500+ Annual Events

- » Cranberry Fest
- » Fall Concert
- » R-Factor
- » Scream Screen Drive-In Movie Fest

... and more.

For the Team Player

28 Intramural and Club Sports Teams

■ Club sports:

- » Aikido
- » Badminton
- » Baseball
- » Basketball (Women's)
- » Cheerleading
- » Dance
- » Equestrian
- » E-sports
- » Golf
- » Ice Hockey
- » Lacrosse (Men's and Women's)
- » Rock Climbing
- » Soccer (Men's and Women's)
- » Softball
- » Swimming
- » Tennis
- » Ultimate Frisbee

- » Unified Sports (with Special Olympics NJ)
- » Volleyball (Men's and Women's)

■ Intramural sports:

- » Basketball
- » Dodgeball
- » Flag Football
- » Floor Hockey
- » Handball
- » Kickball
- » Soccer
- » Softball
- » Volleyball

12

residences

for special interest housing and Living Learning Communities

1st

Stella Johnson '20 became Rider's first Women's Basketball player to be drafted into the WNBA

9

consecutive MAAC Championships for Men's Swimming & Diving



20 **NCAA DIVISION I** SPORTS TEAMS

OUR BRONCS

KNOW HOW TO
MAKE A CROWD

GO



2020-21

Women's Field Hockey,
Women's Volleyball and
Men's Baseball all claimed
conference championships

WILD.

Division I Men's Sports

- » Baseball
- » Basketball
- » Cross Country
- » Golf
- » Indoor Track & Field
- » Outdoor Track & Field
- » Soccer
- » Swimming & Diving
- » Tennis
- » Wrestling

Division I Women's Sports

- » Basketball
- » Cross Country
- » Field Hockey
- » Indoor Track & Field
- » Outdoor Track & Field
- » Soccer
- » Softball
- » Swimming & Diving
- » Tennis
- » Volleyball

GOBRONCS.COM



95%

of Rider students are expected to participate in Enriched Career Experiences such as internships, fieldwork and co-ops

Invest in yourself.

900+

Rider alums are CEOs, presidents and organizational leaders



THE CRANBERRY INVESTMENT

We guarantee that Rider graduates will gain an entry-level position or acceptance into a graduate or professional program in their field of study within six months of graduation or we'll provide career coaching and may recommend either nine additional credits of undergraduate coursework in your field of study at no cost or a paid six-month internship.*

Learn more at:

RIDER.EDU/CRANBERRY-INVESTMENT

*Terms and conditions apply. Coursework or internship to be determined by Rider in its sole discretion.



THE RIDER EXPERIENCE is more than a degree. It's an investment in your growth and potential. That's why we're committed to making Rider affordable the entire time you're here with generous scholarships and financial aid offers that are personalized to you and your family's needs. Once you see what your education helps you do, it just might be the best investment you've ever made.





99%

of students receive
Rider-funded scholarships
and financial aid

\$84.7 million

Total institutional funds awarded by Rider for the 21-22 school year

We adjusted our tuition!

In the fall of 2021, we implemented our Lifting Barriers initiative to help students break through significant obstacles to obtain their college education. Because nothing should stand in the way of student achievement.

Learn more at:

RIDER.EDU/LIFTING-BARRIERS



We're committed to making Rider affordable the entire time you're here with our generous scholarships and grants.

Here are just a few:

- » **Transfer Trustee Scholarship – FULL TUITION!**
- » **STEM Teacher Scholarship – FULL TUITION!**
- » **NJ Stars II Award – \$2,500/year**
- » **Legacy Award – \$2,000/year**
- » **Sibling Grant – \$2,000/year**
- » **PTK Member Scholarship – \$1,000/year**

Recognized and rewarded

All transfer students are awarded scholarships based on GPA.

CUMULATIVE GPA	AMOUNT PER YEAR
3.5-4.0	\$17,000
3.0-3.49	\$14,000
2.75-2.99	\$12,000
2.5-2.74	\$10,000

Learn more at:

RIDER.EDU/SCHOLARSHIPS

Scholarship amounts apply for fall 2022 and spring 2023 applicants.

#27

Best Value School

(U.S. News & World Report, 2020)

60k

grads in our
alumni network

\$106k

median salary for Rider
graduates with 10+ years'
experience in their field

(Payscale.com)

\$19.1k

is the average student
assistance package

Next steps:

- » **February 1**
Transfer Trustee Scholarship application deadline for fall 2022 semester
- » **April 1**
Preferred application and scholarship deadline for fall 2022 semester
- » **May 1**
Preferred deposit deadline for fall 2022 semester
- » **December 1**
Preferred application and scholarship deadline for spring 2023 semester
- » **January 9**
Preferred deposit deadline for spring 2023 semester

Let's talk!

Make an appointment for a one-on-one chat with a transfer counselor at admissions@rider.edu.



*Visits must be completed through the Office of Admission prior to May 1, 2022 and students must also deposit by this date. Enrolled students will receive \$500 to be used toward textbooks at the Rider Bookstore for fall 2022 and \$500 for spring 2023 (\$1,000 total value). Bookstore funds will be credited to the student prior to the start of the 2022-23 academic year. Offer cannot be combined with other aid that covers textbooks. Valid only during 2022-23 academic year.

“ As a transfer student, the transition was smooth and I felt right where I belong. I have been able to get involved and get real world experiences that put the classroom theory into practice. ”

Jason Lima '19

Global Supply Chain Management
Transfer student from Mercer County Community College

Questions?

Admissions

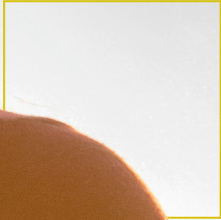
admissions@rider.edu
609-896-5042

[RIDER.EDU/ADMISSIONS](https://www.rider.edu/admissions)

Financial Aid

onestop@rider.edu
609-896-5360

[RIDER.EDU/FINAID](https://www.rider.edu/financialaid)



Ready to take the next step?

No application fee for transfer students!

RIDER.EDU/APPLY

70+ Undergrad Majors:

Business

Accounting, B.S.B.A.
Actuarial Science, B.S.B.A.
Business Administration, B.S.B.A.
Business Analytics, B.S.B.A.
Economics, B.S.B.A.
Entrepreneurial Studies, B.S.B.A.
Finance, B.S.B.A.
Global Supply Chain Management, B.S.B.A.
Health Care Management, B.S.B.A.
Human Resource Management, B.S.B.A.
Information Systems, B.S.B.A.
International Business, B.S.B.A.
Management and Leadership, B.S.B.A.
Marketing, B.S.B.A.

Organizational Psychology, B.S.B.A.
Sport Management, B.S.B.A.

Education

Elementary Education, B.A.
Secondary Education, B.A.

Arts

Acting for Film, Television and Theatre, B.F.A.
Arts & Entertainment Industries Management, B.A.
Dance, B.A.
Dance Science, B.A.
Film and Television, B.A.
Game & Interactive Media Design, B.A.
Music, B.A.M.
Music Education, B.M.
Music Production, B.A.

Musical Theatre, B.F.A.
Musical Theatre: Music Direction, B.M.
Music Theory and Composition, B.M.
Organ Performance, B.M.
Piano, B.M.
Sacred Music, B.M.
Theatre, B.A.
Voice Performance, B.M.

Liberal Arts & Sciences

Actuarial Science, B.A.
American Studies, B.A.
Behavioral Neuroscience, B.S.
Biochemistry, B.S.
Biology, B.S. or B.A.
Chemistry, B.S. or B.A.
Communication Studies, B.A.
Computer Science, B.S.
Criminal Justice, B.A.
Cybersecurity, B.S.
Earth Sciences, B.A.
Economics, B.A.
English, B.A.
Environmental Sciences, B.S.

Environmental Studies, B.A.
Exercise Science, B.S.
French, B.A.
Geosciences, B.S.
Global Studies, B.A.
Graphic Design, B.A.
Health Care Policy, B.A.
Health Sciences, B.S.
History, B.A.
Integrated Sciences & Math, B.A.
Journalism, B.A.
Marine Sciences, B.S.
Mathematics, B.A.
Organizational Psychology, B.A.
Philosophy, B.A.
Political Science, B.A.
Psychology, B.A.
Public Relations, B.A.
Radio and Podcasting, B.A.
Sociology, B.A.
Spanish, B.A.
Sports Media, B.A.
Undeclared Liberal Arts

Fifth-Year Graduate Options:

Master of Accountancy (MAcc)
Master of Business Administration (MBA)
Information Systems, M.S.
Arts Management and Executive Leadership, M.A.
Athletic Leadership, M.A.
Business Communication, M.A.
Cybersecurity, M.S.
Homeland Security, M.A.
Special Education, M.A.
Master of Music Education (M.M.E.)
Guaranteed admission with Thomas Jefferson University
Athletic Training, M.S.

Pre-Professional Programs:

Pre-Allied Health Advising
Pre-Law
Pre-Med
Pre-Dental

Browse Rider's majors, minors and programs at . . .

[RIDER.EDU/PROGRAM-FINDER](https://www.rider.edu/program-finder)



RIDER
UNIVERSITY

2083 Lawrenceville Road, Lawrenceville, NJ 08648-3099 USA
800-257-9026 ■ 609-896-5042

[RIDER.EDU/ADMISSIONS](https://www.rider.edu/admissions)