

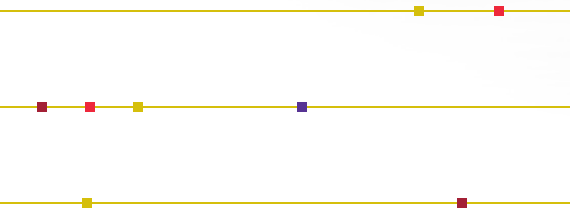


RIDER
UNIVERSITY

Explore
what's

possible

**Your
mind
will
wander.**





r
o a



**And
that's
a good
thing.**

m





#2

Leadership development
program in the country
(HR.com, 2018)

-
-
-
-

We belong to the herd,
but we are capable of great
independence. Wandering
far from well-trodden paths,
we come upon new and
unexpected trails.

**Free to learn
the way we
learn best.**

We are

f r





#21
Most Innovative
School
(U.S. News & World Report, 2019)

ee

to roam.



A campus

g r e



and small

a t





1 IN 4 STUDENTS

is first-generation to college, so everyone can feel at home here

**280
ACRES**

to wander, discover and learn by heart (including a 2.7-acre lake!)



Our home may be in central New Jersey, but on a grander scale, it's central to so much more.

The Rider campus is just a train ride from Philadelphia and New York City and only an hour drive to the beach.



3,630
undergraduates
(that's a lot of new friends)



Broncs
journey from:

36 STATES

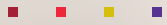
—

2 U.S. TERRITORIES

—

53 COUNTRIES

Learning
doesn't
happen the
same way
for all of us.



And it
definitely
doesn't
happen all
in one place.

OUR ENGAGED LEARNING

Program gives you the opportunity to be captivated and motivated by eye-opening, life-changing experiences in nearby communities and all over the world. Together, the six pillars of the program will create a meaningful education that is uniquely yours.





Biology professor
Dr. James Riggs
works alongside
research students
to learn about
immunology and
microbiology.



11:1

student-to-faculty ratio

Engaged Learning in Action

» Service

Matthew Hernberg '20, Marketing, B.A. started DeliverMe!, a delivery service that helps local residents in South Jersey get hand sanitizer, masks and other convenience items and groceries, during the peak of the COVID-19 pandemic.

» Collaboration

Lauren Minore '20, Political Science, Journalism, B.A. works as a Desk Assistant for World News Tonight with David Muir at ABC News due, in part, to her connections with the Rebovich Institute.

» Creative Arts

Felicia Villa '20, Music Education (Voice Performance), B.A. was selected to sing soprano in the elite Westminster Choir, which performs nationally and internationally, and has accepted a Music Director/Teacher position at Point Pleasant Borough High School and Middle School.

**17 STUDENTS IN THE AVERAGE RIDER CLASS,
AND NO GRADUATE TEACHING ASSISTANTS,
SO YOUR PROFESSORS WILL ALWAYS KNOW YOUR NAME**



Dr. Paul Jivoff shares his expertise on the reproductive biology of the blue crab.

94% OF FACULTY have a Ph.D. or the highest degree possible in their fields

» Global Outlook

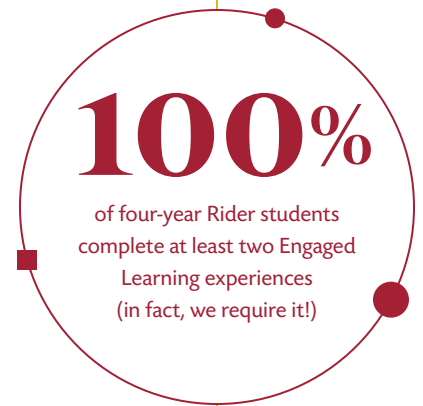
RahQuan King-Stubbs '19, B.S.B.A. in Accounting, Data Analytics (minor) traveled on Rider University-sponsored trips to Ireland and England before landing a job as Audit Associate in Financial Services at KPMG.

» Leadership

Julianna Ezzo '20, Secondary Education & History, B.A., E.S.L. (minor) was a community assistant in Wright Hall and a member of the conduct board for the Office of Community Standards before being hired as an ESL teacher in the Franklin Township Public School District.

» Hands-On Experiences

Carissa Moore '20, Environmental Science & Chemistry currently works as a Lab Assistant at Rider and will be attending graduate school at The Ohio State University.



A closer look at our Broncs . . .

58% FEMALE

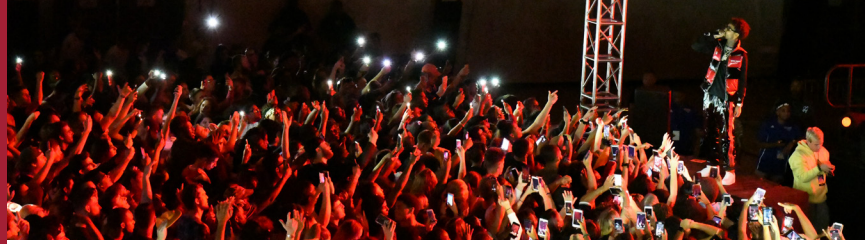
42% MALE



44% STUDENTS OF COLOR

RIDER.EDU/ENGAGED-LEARNING

Try a little
(or a lot) of
everything.



COLLEGE FRIENDSHIPS ARE LEGENDARY, and community makes us who we are. We're a vibrant, thoughtful bunch, brought here by a shared spirit of discovery. Our campus is an epicenter of year-round activities, deep-seated traditions, and diverse clubs and organizations that make Rider a wonderful place to call home.

For the Community Leader

150+ Student Organizations

Here are just a few . . .

- » Student Government Association
- » Student Entertainment Council
- » 107.7 The Bronc WRRF FM
- » Latin American Student Organization
- » Rider University Network On-Campus TV Station

The Center for Diversity & Inclusion

is a cornerstone of the University's efforts to cultivate a welcoming climate for its vibrant, diverse community.

Find out more at rider.edu/cdi

1 in 10
students

pledges our 15 fraternities
or sororities



For the Life of the Party

500+ Annual Events

- » Cranberry Fest
- » Fall Concert
- » R-Factor
- » Scream Screen Drive-In Movie Fest

... and more.

For the Team Player

28 Intramural and Club Sports Teams

■ Club sports:

- » Aikido
- » Badminton
- » Baseball
- » Basketball (Women's)
- » Cheerleading
- » Dance
- » Equestrian
- » E-sports
- » Golf
- » Ice Hockey
- » Lacrosse (Men's and Women's)
- » Rock Climbing
- » Soccer (Men's and Women's)
- » Softball
- » Swimming
- » Tennis
- » Ultimate Frisbee

- » Unified Sports (with Special Olympics NJ)
- » Volleyball (Men's and Women's)

■ Intramural sports:

- » Basketball
- » Dodgeball
- » Flag Football
- » Floor Hockey
- » Handball
- » Kickball
- » Soccer
- » Softball
- » Volleyball

12

residences

for special interest housing and Living Learning Communities

1st

Stella Johnson '20 became Rider's first Women's Basketball player to be drafted into the WNBA

9

consecutive MAAC Championships for Men's Swimming & Diving



20 **NCAA DIVISION I** SPORTS TEAMS

OUR BRONCS

KNOW HOW TO
MAKE A CROWD

GO



Division I ■ Men's Sports

- » Baseball
- » Basketball
- » Cross Country
- » Golf
- » Indoor Track & Field
- » Outdoor Track & Field
- » Soccer
- » Swimming & Diving
- » Tennis
- » Wrestling

Division I ■ Women's Sports

- » Basketball
- » Cross Country
- » Field Hockey
- » Indoor Track & Field
- » Outdoor Track & Field
- » Soccer
- » Softball
- » Swimming & Diving
- » Tennis
- » Volleyball

2020-21

Women's Field Hockey,
Women's Volleyball and
Men's Baseball all claimed
conference championships

WILD.

GOBRONCS.COM



95%

of Rider students are expected to participate in Enriched Career Experiences such as internships, fieldwork and co-ops

Invest in yourself.



900+

Rider alums are CEOs, presidents and organizational leaders



THE CRANBERRY INVESTMENT

We guarantee that Rider graduates will gain an entry-level position or acceptance into a graduate or professional program in their field of study within six months of graduation or we'll provide career coaching and may recommend either nine additional credits of undergraduate coursework in your field of study at no cost or a paid six-month internship.*

Learn more at:

RIDER.EDU/CRANBERRY-INVESTMENT

*Terms and conditions apply. Coursework or internship to be determined by Rider in its sole discretion.



THE RIDER EXPERIENCE is more than a degree. It's a four-year investment in your growth and potential. That's why we're committed to making Rider affordable the entire time you're here with generous scholarships and financial aid offers that are personalized to you and your family's needs. Once you see what your education helps you do, it just might be the best investment you've ever made.



November 15



Apply and submit your FAFSA by November 15, and you'll receive your merit-based scholarship decision and estimated financial aid offer by December 20.

Because Rider Early Action Admission is non-binding, you have until May 1 to accept.

99%

of students receive
Rider-funded scholarships
and financial aid

\$84.7 million

Total institutional funds awarded by Rider for the 21–22 school year

We adjusted our tuition!

In the fall of 2021, we implemented our Lifting Barriers initiative to help students break through significant obstacles to obtain their college education. Because nothing should stand in the way of student achievement.

Learn more at:

RIDER.EDU/LIFTING-BARRIERS

We're committed to making Rider affordable the entire time you're here with our generous scholarships and grants.

Here are just a few:

- » **Trustee Scholarship – FULL TUITION!**
- » **Norm Brodsky Idea/Business Concept Competition – FULL TUITION!**
- » **Presidential Scholarship** – \$21,000/year
- » **Provost Scholarship** – \$19,000/year
- » **Deans' Scholarship** – \$17,000/year
- » **Founder's Award** – \$15,000/year
- » **Rider Recognition Award** – \$12,000/year
- » **Community Scholars/Bonner Leaders** – \$2,500/year
- » **Legacy Award** – \$2,000/year
- » **Sibling Grant** – \$2,000/year
- » **Gail Bierenbaum Women's Leadership Council Mentoring Program** – \$1,000/year

Learn more at:

RIDER.EDU/SCHOLARSHIPS

Scholarship amounts apply for fall 2022 and spring 2023 applicants.

#27

Best Value School

(U.S. News & World Report, 2020)

60k

grads in our
alumni network

\$106k

median salary for Rider
graduates with 10+ years'
experience in their field

(Payscale.com)

\$19.1k

is the average student
assistance package

Broncs at a glance:

Fall 2021 Entering Class Averages

**Cumulative
High School GPA: 3.4**

SAT: 1120

ACT: 22

Good news! Rider is test-optional for nearly all applicants, so your application can highlight your strengths, not your scores. No SAT or ACT required.



*Visits must be completed through the Office of Admission prior to May 1, 2022 and students must also deposit by this date. Enrolled students will receive \$500 to be used toward textbooks at the Rider Bookstore for fall 2022 and \$500 for spring 2023 (\$1,000 total value). Bookstore funds will be credited to the student prior to the start of the 2022-23 academic year. Offer cannot be combined with other aid that covers textbooks. Valid only during 2022-23 academic year.

Important dates:

- » **November 15**
Early action application deadline (non-binding)
Trustee Scholarship deadline
B.F.A. and B.A. in Musical Theatre application deadline
B.F.A. in Acting for Film, Television, and Theatre deadline
- » **January 15**
Preferred freshman deadline for scholarship consideration
- » **February 1**
Priority deadline for filing the FAFSA
Priority deadline to apply for the Educational Opportunity Program (EOP)
- » **May 1**
Enrollment deposit deadline for fall admission

“ I gained leadership skills, built better understanding, worked in teams, and [Rider] propelled me in getting out of my comfort zone. ”

Tara Mason, Class of 2023
Psychology

Questions?

Admissions

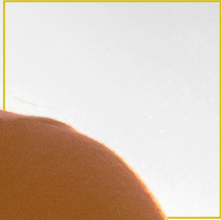
admissions@rider.edu
609-896-5042

RIDER.EDU/ADMISSIONS

Financial Aid

onestop@rider.edu
609-896-5360

RIDER.EDU/FINAID



Ready to take the next step?

[RIDER.EDU/APPLY](https://www.rider.edu/apply)

RIDER
UNIVERSITY

70+ Undergrad Majors:

Business

Accounting, B.S.B.A.
Actuarial Science, B.S.B.A.
Business Administration, B.S.B.A.
Business Analytics, B.S.B.A.
Economics, B.S.B.A.
Entrepreneurial Studies, B.S.B.A.
Finance, B.S.B.A.
Global Supply Chain Management, B.S.B.A.
Health Care Management, B.S.B.A.
Human Resource Management, B.S.B.A.
Information Systems, B.S.B.A.
International Business, B.S.B.A.
Management and Leadership, B.S.B.A.
Marketing, B.S.B.A.

Organizational Psychology, B.S.B.A.
Sport Management, B.S.B.A.

Education

Elementary Education, B.A.
Secondary Education, B.A.

Arts

Acting for Film, Television and Theatre, B.F.A.
Arts & Entertainment Industries Management, B.A.
Dance, B.A.
Dance Science, B.A.
Film and Television, B.A.
Game & Interactive Media Design, B.A.
Music, B.A.M.
Music Education, B.M.
Music Production, B.A.

Musical Theatre, B.F.A.
Musical Theatre: Music Direction, B.M.
Music Theory and Composition, B.M.
Organ Performance, B.M.
Piano, B.M.
Sacred Music, B.M.
Theatre, B.A.
Voice Performance, B.M.

Liberal Arts & Sciences

Actuarial Science, B.A.
American Studies, B.A.
Behavioral Neuroscience, B.S.
Biochemistry, B.S.
Biology, B.S. or B.A.
Chemistry, B.S. or B.A.
Communication Studies, B.A.
Computer Science, B.S.
Criminal Justice, B.A.
Cybersecurity, B.S.
Earth Sciences, B.A.
Economics, B.A.
English, B.A.
Environmental Sciences, B.S.

Environmental Studies, B.A.
Exercise Science, B.S.
French, B.A.
Geosciences, B.S.
Global Studies, B.A.
Graphic Design, B.A.
Health Care Policy, B.A.
Health Sciences, B.S.
History, B.A.
Integrated Sciences & Math, B.A.
Journalism, B.A.
Marine Sciences, B.S.
Mathematics, B.A.
Organizational Psychology, B.A.
Philosophy, B.A.
Political Science, B.A.
Psychology, B.A.
Public Relations, B.A.
Radio and Podcasting, B.A.
Sociology, B.A.
Spanish, B.A.
Sports Media, B.A.
Undeclared Liberal Arts

Fifth-Year Graduate Options:

Master of Accountancy (MAcc)
Master of Business Administration (MBA)
Information Systems, M.S.
Arts Management and Executive Leadership, M.A.
Athletic Leadership, M.A.
Business Communication, M.A.
Cybersecurity, M.S.
Homeland Security, M.A.
Special Education, M.A.
Master of Music Education (M.M.E.)
Guaranteed admission with Thomas Jefferson University
Athletic Training, M.S.

Pre-Professional Programs:

Pre-Allied Health Advising
Pre-Law
Pre-Med
Pre-Dental

Browse Rider's majors, minors and programs at . . .

[RIDER.EDU/PROGRAM-FINDER](https://www.rider.edu/program-finder)



RIDER
UNIVERSITY

2083 Lawrenceville Road, Lawrenceville, NJ 08648-3099 USA
800-257-9026 ■ 609-896-5042

[RIDER.EDU/ADMISSIONS](https://www.rider.edu/admissions)