

- Pre-Physician Assistant
- Pre-Professional
- History**
  - Public History
- International Studies**
  - Global Economy
  - Cultural Studies
  - Governance and Conflict
- Mathematics**
  - Actuarial Science
  - Secondary Education
  - Mathematics
- Nursing**
- Physics**
  - Applied Physics
  - Nanotechnology
  - Pre-Engineering
  - Traditional
- Political Science**
  - Pre-Law
- Psychology**
- Recreation Management**
  - Adventure Leadership & Outdoor Recreation
  - Cultural Heritage Management
  - Tourism & Event Management
  - Therapeutic Recreation
- Social Work**
- Sociology**
  - Delinquent Youth Analysis
  - Industry and Economics
- Sport Management**

**ASSOCIATES DEGREES\*\***

- Criminal Justice (AA)
- Sustainability Studies (AA)
- Healthcare Professions (AAS)
- Business Administration/ Healthcare Management (AS)
- Healthcare Professions/ Social Services (AAS)
- Nanotechnology
- Business Administration/ Management (AS)
- Nursing (ASN)

\*\* These programs are available at both campuses.

**DISCOVER YOUR POTENTIAL**

Make success a reality. Study and learn in a peaceful, natural setting. Think of LHU as the personal, public university that makes your ideal career path our highest priority.

**TAKE THE NEXT STEP!**

Apply here:  
<https://lockhaven.edu/apply>

**LOCK HAVEN UNIVERSITY**  
 Office of Admissions  
 Lock Haven, PA 17745  
[www.lockhaven.edu](http://www.lockhaven.edu)  
[admissions@lockhaven.edu](mailto:admissions@lockhaven.edu)  
 +1(570) 484-2027

INVEST IN YOUR FUTURE

**AFFORDABLE**

High school seniors can begin completing the Free Application for Federal Student Aid (FAFSA) on October 1, 2021. For priority processing, please complete your application by December 1, 2021. Use school code 003323. Learn more here: <https://lockhaven.edu/financialaid>.

**All accepted students will automatically be considered for a merit-based scholarship.** Students will be notified of the scholarship amount shortly after acceptance. Keep in mind tuition costs below are based on the 2020-21 academic year and are subject to change.

**OUR CLEARFIELD CAMPUS**

To make education as convenient as possible, we offer students a choice of location, with a second campus in Clearfield, Pennsylvania. Choose from a variety of Associates, Bachelors, and Masters degree programs. Find out more at <http://www.lockhaven.edu/clearfield/>.

**PENNSYLVANIA RESIDENTS**

Tuition.....	\$7,716
Housing* .....	\$6,540
Meal Plan.....	\$3,828
Fees .....	\$3,162
<b>Total.....</b>	<b>\$21,246</b>

**OUT-OF-STATE RESIDENTS**

Tuition.....	\$17,290
Housing* .....	\$6,540
Meal Plan.....	\$3,828
Fees .....	\$3,412
<b>Total.....</b>	<b>\$31,070</b>

\* Students who reside within 30 miles of the university can choose to either commute from home, or live in the residence halls.

The above tuition and fee schedules are based on 15 credits per semester. Housing and meal costs include a shared traditional residence hall, and a 14-meals-per-week meal plan.



**LHU: WHERE EDUCATION IS PERSONAL**



THE ACADEMIC EXPERIENCE

**GET READY**

Prepare for the demands of the 21st century job market. Experience one-on-one attention from professors who know your name through a deeply personal educational approach. Explore our majors and minors here: <https://www.lockhaven.edu/academics/programs.html>.

**BACHELORS DEGREES**

- Accounting
- Applied Computer Science & Information Systems
  - Database and Network Administration
  - Interdisciplinary Computing
  - Mobile & Game Application Development

- Art and Design
  - Art and Studio Art

- Biology
  - Biomedical Sciences
  - Cellular-Organismal Ecology-Environmental
  - Marine Biology
  - Secondary Education Biology

- Business Administration
  - Business Intelligence
  - Entrepreneurship
  - Finance and Economics
  - International Business Management
  - Marketing

- Chemistry
  - Biochemistry
  - Clinical Laboratory Science
  - Forensic Nanoscience
  - Secondary Education Chemistry

- Communication
  - Advertising and Public Relations
  - Electronic Media Journalism
  - Organizational and Presentational Communication

- Criminal Justice \*\*
  - Conservation Law Enforcement

- Disability and Community Service

- Education
  - Middle/Elementary 4-8 Health & Physical Education (K-12)
  - Pre-K-4/Early Childhood\*\*
  - Secondary Education Special Education

- English
  - Literature Writing

- Secondary Education English

- Exploratory Studies (undecided)

- Foreign Language
  - Spanish

- Geology
  - Applied Geology
  - Engineering Geology
  - Geography-GIS
  - Water and Environment
  - Secondary Education Earth & Space Science
  - Secondary Education General Science

- Health & Physical Education
  - K-12 Certification
  - Aquatics Coaching
  - Sport & Physical Education in Corrections

- Health Sciences
  - Applied Health Studies\*
  - Community Public Health Education
  - Exercise Science (Pre-Athletic Training)
  - Pre-Physical Therapy

THE LOCK HAVEN DIFFERENCE

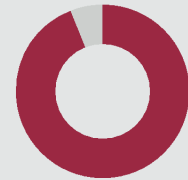
## SEE WHERE LHU CAN TAKE YOU.

Bigger colleges cater to thousands. We're a small-town university with big plans for your future. Come to LHU for current, relevant skills and see where we can take you. Study on a beautiful campus where professors and staff guide you every step of the way.



## YOU'RE GOING TO LOVE IT HERE.

At LHU, so many exciting things come in a small package.



**94%**  
STUDENTS RECEIVE  
FINANCIAL AID



**98%**  
OF RECENT GRADS WERE  
EMPLOYED, IN THE MILITARY,  
OR IN GRAD SCHOOL WITHIN  
SIX MONTHS

**\$40** MILLION  
FINANCIAL AID  
AWARDED  
ANNUALLY

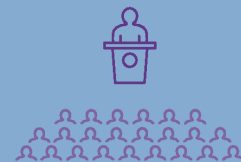
GET SUPPORT: TUTORIAL, WRITING,  
AND MATH CENTERS



ENJOY CAREER DEVELOPMENT  
AND PROFESSIONAL GUIDANCE



**49** MAJORS **47** CERTIFICATIONS  
WITH MINORS



**14:1** STUDENT:TEACHER  
RATIO  
**23** AVERAGE  
CLASS SIZE



**18** DIVISION II  
SPORTS

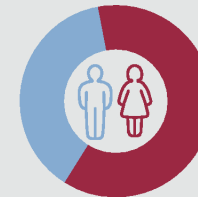
**2** DIVISION I  
SPORTS

**150+**  
STUDENT CLUBS &  
ORGANIZATIONS

**20**  
COUNTRIES  
TO VISIT WHEN  
STUDYING ABROAD

**63%** FEMALE  
STUDENTS

**37%** MALE  
STUDENTS



**209** FULL-TIME  
FACULTY

**83%** WITH EARNED  
DOCTORATES



**35,000+**  
STRONG  
ALUMNI  
NETWORK



FOUNDED IN 1870  
AS THE CENTRAL STATE  
NORMAL SCHOOL,  
WE ARE PROUD TO  
CELEBRATE 150  
YEARS OF ACADEMIC  
EXCELLENCE.

WELCOME TO HAVEN NATION

## HAVEN NATION

Whether you want to cheer on the Bald Eagles from the bleachers, or get in on the action, the LHU campus has much to offer. We're a proud member of the Pennsylvania State Athletic Conference (PSAC), and our wrestling team is now a member of the Mid-American Conference (MAC). You'll find 20 NCAA athletic teams, as well as exciting club sports. LHU competes in both Divisions I and II, with 399 student athletes, 450 club-competition athletes, and roughly 800 intramural participants. Follow Haven Nation sports at [www.golhu.com](http://www.golhu.com).

### WOMEN'S

Basketball  
Cross Country  
Field Hockey  
(A-10; Division 1)  
Golf  
Lacrosse  
Soccer  
Softball  
Swimming  
Tennis  
Track and Field  
(indoor)  
Track and Field  
(outdoor)  
Volleyball  
Wrestling

### MEN'S

Baseball  
Basketball  
Cross Country  
Football  
Soccer  
Track and Field (outdoor)  
Track and Field (indoor)  
Wrestling (Division I)

### CLUB SPORTS

Archery  
Boxing Club  
Cheerleading  
Men's Lacrosse  
Men's Rugby  
Men's Volleyball  
Quidditch Team  
Women's Rugby

