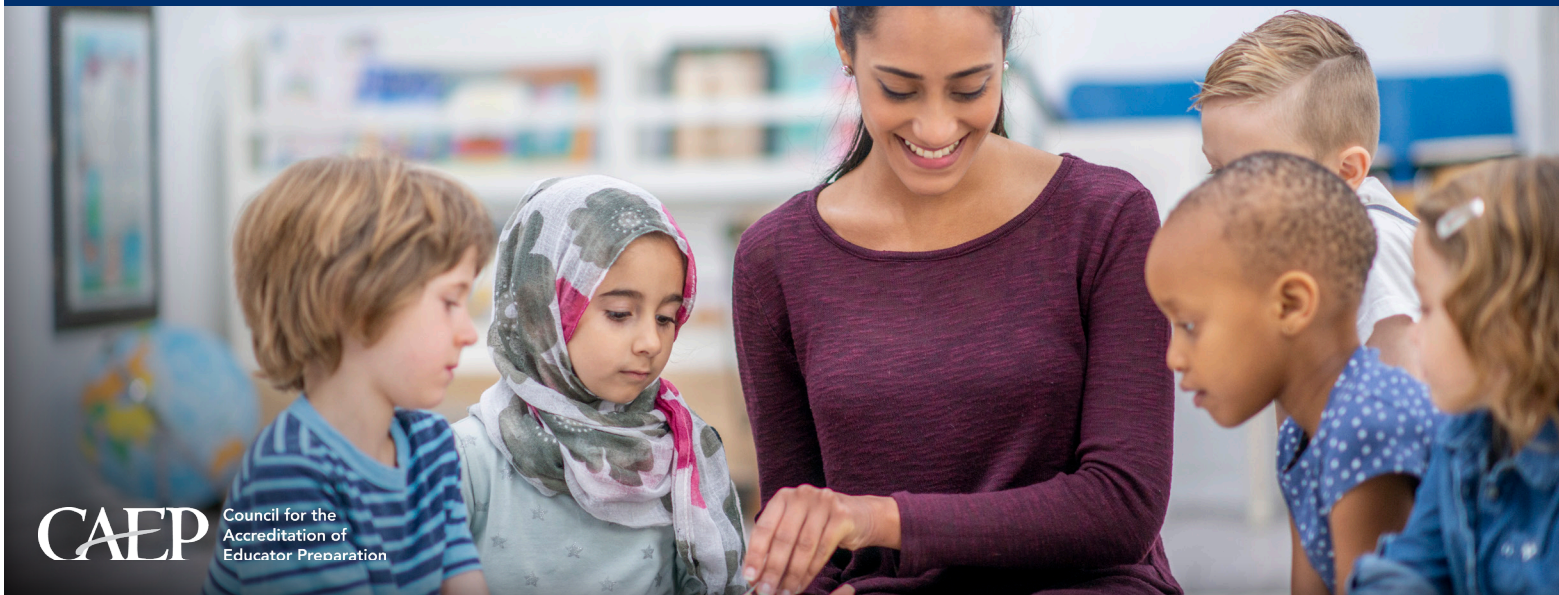


B.S. in Elementary Education (K-6)



CAEP Council for the Accreditation of Educator Preparation

Become a Teacher and Build the Foundations of Their Future

The Bachelor of Science in Elementary Education (K-6), one of Wilmington University's four undergraduate teacher preparation programs, combines educational theory and classroom practice into specialized coursework that satisfies the Delaware Department of Education's content knowledge requirements and qualifies our students to seek state licensure and certification as educators in Delaware's public and charter elementary schools.



Learn How To Teach From Experienced Educators

College of Education students develop their skills through comprehensive coursework taught by faculty members with real experience in the practice of teaching K-12 students and in the challenges that educators face in today's public schools. College of Education graduates, once employed, are rated by their principals and supervisors as uniquely prepared to design and lead effective learning experiences for diverse student populations.



Year-Long Residency Option Leads to Excellence in Teacher Preparedness

WilmU's immersive Year-Long Residency student-teaching option offers an alternative to the traditional 80-day student-teaching model and yields outstanding results. Candidates who complete the program are in high demand and have secured excellent teaching positions in Delaware and in high-quality schools across the country.



The Choice of Top Educators

WilmU's graduates bring excellence in education to classrooms throughout Delaware and the mid-Atlantic region. More than 3,500 of the state's teachers earned their bachelor's or master's degrees at WilmU, including 12 of the last 16 Teachers of the Year chosen by Delaware's Department of Education. In addition, about half of Delaware's principals and assistant principals have studied at WilmU.

Get started today at wilmu.edu/Apply.



40 courses | 126 total credits
Required courses and total credits vary based on degree selection.

\$1,257
per course

Cost of a typical 3-credit course



Classes start every 8 weeks.



WILMINGTON
UNIVERSITY™

EDUCATION & LIBERAL ARTS

B.S. in Elementary Education (K-6)

General Education Requirements (48 credits)

- CTA 206 Computer Applications
- OR
- FYE 101 First-Year Experience Seminar
- ECO 105 Fundamentals of Economics
- MAT 201 Mathematics for Teachers I
- MAT 202 Mathematics for Teachers II
- MAT 304 Mathematics for Teachers III
- PHI 100 Introduction to Critical Thinking
- BIO 251 Biology I (with lab)
- ENG 121 English Composition I
- ENG 122 English Composition II
- ENG 320 Advanced Composition
- HIS 302 Social Studies for Elementary Teachers
- HIS 316 American History
- ENV 305 Earth Science (with lab)
- SCI 307 Physical Science (with lab)
- POL 300 American Politics

Fine Arts Requirements (6 credits)

Select two courses from the following:

- ART 101 Art Appreciation 1
- ART 203 Non-Western Art
- ART 210 Basic Design
- ART 301 Drawing and Painting
- ART 302 Drawing
- ART 304 Painting
- ART 315 Watercolor Painting
- COM 431 Media and Society
- DRA 105 Introduction to the Theater
- DRA 110 Acting
- DSN 110 Fundamentals of Drawing
- DSN 210 Basic Photoshop
- HIS 230 History of Art and Design
- MUS 101 Music Appreciation
- SPA 301 Practical Spanish I
- TEC 215 Basic Photography Techniques

Behavioral Science Core (6 credits)

- PSY 333 Psychology of the Exceptional Child
- PSY 336 Child Development

Education Core (48 credits)

- EDU 102 E-Folio
- ECE 105 Developmentally Appropriate Practice
- ECE 214 Creating Environments for Learning
- EDU 304 Health and Physical Education
- EDU 310 Applied Behavior Analysis and Classroom Culture
- EDU 311 Assistive Technology
- EDU 204 Leadership and Collaboration
- EDU 314 Instructional Strategies in Elementary Education
- EDU 315 Learner Development and Numeracy
- EPY 201 Development and Implementation of IEPs
- EPY 402 Learning Differences and Assessment of Exceptional Children
- RDG 203 Learner Development and Early Literacy
- RDG 308 Diagnosis and Correction of Learning Differences in Reading
- EDU 402 Integrated Methods to Teaching Elementary Language Arts/Reading
- EDU 403 Integrated Methods to Teaching Elementary Social Studies
- EDU 404 Integrated Methods to Teaching Elementary Science
- EDU 405 Integrated Methods to Teaching Elementary Math

Clinical Components (15 credits)*

- EDU 390 Practicum I
- EDU 391 Practicum II
- EDU 392 Practicum III
- EDU 451 Student Teaching
- EDU 452 Performance Assessment

EDU 452 Performance Assessment must be taken in conjunction with EDU 451 Student Teaching.

Have questions? We're here to help!

Academic Recruiters

 **(302) 213-3916**
recruiting@wilmu.edu



The College of Education and Liberal Arts is accredited by the Council for the Accreditation of Educator Preparation (CAEP).

Get Started Today!
wilmu.edu/Apply



WILMINGTON
UNIVERSITY™

EDUCATION & LIBERAL ARTS

WilmU is a registered trademark of Wilmington University.
All rights reserved. © Wilmington University 2024

EDU-145 R4 9/24