

Library News

We help you learn

FALL/WINTER 2010-2011 ◦ WILMU.EDU/LIBRARY ◦ VOLUME 5, ISSUE 1



MESSAGE FROM THE DIRECTOR

Over the past two years, student surveys have shown keen interest in revitalizing library space. I am pleased to let you know that the main campus library renovation which began in earnest last June is nearly complete. Our newly furnished Information Commons is equipped with 30 new workstations, an instructor's station and a state of the art Smart Board projector. This space will accommodate library orientations as well as support student research and computing needs. A new comfortably furnished social space with café will help you when you need to revitalize yourself before "hitting the books." You will also notice freshly painted walls and new carpeting to accentuate the new space. Work is also starting on construction of five new group study rooms as well as renovation of the Wilson Graduate Center Library Resource Room. As we begin a new school year, consider how the library can help you in your studies. There are many new resources and staff eager and willing to support you. Read more about them in this issue. Best wishes for success in your classes!

- Jim McCloskey, Library Director

WHAT'S NEW

New Library Commons and Café Added
Database Improvements
New Library Work Study Students and Employees
LibGuides Growth Continues
The Library Joins Facebook
Nursing Databases Added
Resource Focus: Streaming Videos

INSIDE THIS ISSUE

Opposing Viewpoints	2
Get To Know The Staff	2
Library Commons Renovation	3
Delaware Library Catalog	4
LibGuides Growth	4
New Nursing Resources	5
EBSCOhost Improvements	5
Streaming Videos	6

OPPOSING VIEWPOINTS DATABASE MAKES SOME IMPROVEMENTS

Opposing Viewpoints Resource Center is now Opposing Viewpoints In Context

Based on the popular Opposing Viewpoints Resource Center, Opposing Viewpoints In Context answers the call for a better way to explore the most debated topics. This next-generation portal, part of an exciting new lineup of online resources, delivers a range of perspectives on important issues. With its scope and depth, Opposing

Viewpoints in Context supports virtually any curricular, academic or general-interest need. Informed, differing views help learners develop critical-thinking skills and draw their own conclusions. Users will find a remarkable compilation of proven reference content - including the award-winning Opposing Viewpoints series from Greenhaven Press -

integrated with the best multimedia available today.



This includes:

- Video, audio streams & podcasts
- Easy-to-use image gallery
- National and global news sources updated daily
- Expert-selected full-text articles
- Interactive maps

NEW WORK STUDY STUDENTS JOIN THE LIBRARY

The Library would like to welcome our work study students for the school year.



SJ, Sojourner James



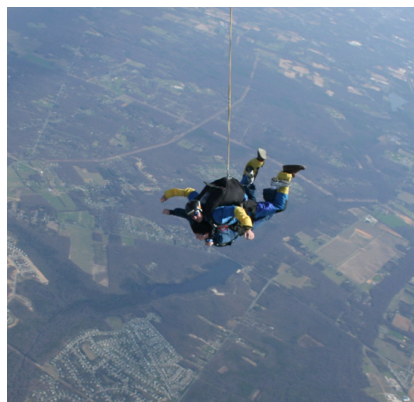
Samuel Mencher



Rachel Despina

GET TO KNOW THE LIBRARY STAFF

Featured Staff Member | Adrienne Johnson, Outreach Librarian



Adrienne's recent skydiving adventure!

Adrienne Johnson joined the Library in fall 2006. She graduated with her Bachelor's degree in History and Art History and her Master's degree in Information and Library Science. Adrienne currently oversees services and provides library instruction to all of our site locations. She is frequently on the road traveling to different campuses throughout Delaware and New Jersey. In addition, she also manages the Library's serials

collection and formally processes the University archives. Since Adrienne began she has seen many changes throughout the Library; these include off-campus access to resources, transitioning print collections to electronic, and now the physical transformation of the main Library in New Castle. When asked what she likes best about working in the Library, she replied, "Working with our students is the most rewarding part of the job. I also enjoy the variety of my job and being able to meet and work with students, faculty and staff at all of our locations." Looking toward the future, Adrienne feels the Library will continue to expand and adapt to meet the needs of our students regardless of where they are taking classes.

INTRODUCING... THE NEW LIBRARY COMMONS & CAFÉ

Space is always the “final frontier” and certainly provides us with the opportunity to explore. The Wilmington University Library space now includes a new instructional area, social space with café, five new study rooms, and a classy looking display wall for periodicals, new books and other library information. The Café in the Library is a great place to grab a coffee and snack. And, you can continue working on your classwork since there’s space to plug in your laptop or mobile device too! However, the Library Café needs a name. Please let us know your suggestion for naming the new Library Café. Thanks!

Café Hours: Monday - Thursday 11:00am - 7:30pm & Friday, 11:00am - 2:00pm



Submit a name for the new Library Café here!
<http://www.surveymonkey.com/s/H6G3FT8>

(Left) Renovations on the Library began this summer, during which many new walls were built.



(Below) Take a look at the new magazine/journal wall, offering a comfortable seating area and nearby café.



(Above) The new Library Commons area, with thirty workstations, was added for library instruction courses.

(Right) The new Library Commons Café is the perfect stop while on break to grab a drink and snack.



Take a look at all of the renovation photos on the [Library Flickr Page!](#)

LIBRARY WELCOMES NEW STAFF MEMBERS

Please join us in welcoming them to the Library!



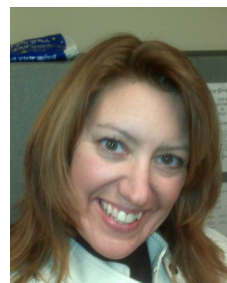
Janis McKnight, PT Affiliate Librarian



Richard James, PT Affiliate Librarian



Michelle Reyes, FT Affiliate Librarian



Mary Whalen, PT Affiliate Librarian

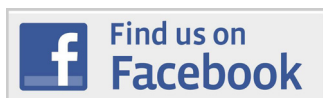
LIBRARY RECEIVES GRANT FOR NEW CATALOG SYSTEM

The Library was given a grant of \$2,000 to help with the implementation of the Delaware Library Catalog System. We are very grateful for all the support from the Delaware Division of Libraries. Thank you!



THE LIBRARY IS NOW ON FACEBOOK!

Check out the new Library Facebook page. Updated with the newest library resources, current hours and upcoming library events. Click below to view our page!



DELAWARE LIBRARY CATALOG SYSTEM

The Library joins the Delaware Library Catalog System

The Library has merged catalogs with the statewide Delaware Library Catalog System. Previously called WebCat, our catalog system is now part of a multi-library statewide catalog system. The new system will enable users to borrow materials from participating libraries through the catalog's 'Place Hold' feature.

[SEARCH FOR MATERIALS IN OUR CATALOG SYSTEM NOW! CLICK HERE](#)

New Castle County

Delaware Academy of Medicine
 Delaware Division of Substance Abuse & Mental Health
 DTCC- Stanton & Wilmington
 Wilmington Public Library
 Wilmington University Library
 NEW! New Castle County System
 Appoquinimink Library
 Bear Library
 Brandywine Hundred Library
 Claymont Library
 Corbit-Calloway Library
 Delaware City Library
 Elsmere Library
 Garfield Park Library
 Hockessin Library
 Kirkwood Highway Library
 Newark Free Library
 New Castle Public Library
 Woodlawn Public Library

Kent County

Delaware Division of Libraries
 Delaware Division of Historic & Cultural Affairs
 Delaware Public Archives
 DTCC- Terry Campus
 Dover Public Library
 Harrington Public Library
 Kent County Public Library
 Smyrna Public Library
 Wesley College Parker Library



Sussex County

Bridgeville Public Library
 Delmar Public Library
 Delmarva Christian High School
 DTCC- Owens Campus
 Frankford Public Library
 Georgetown Public Library
 Greenwood Public Library
 Laurel Public Library
 Lewes Historical Society
 Lewes Public Library
 Milford Public Library
 Millsboro Public Library
 Milton Public Library
 Rehoboth Beach Public Library
 Seaford District Library
 Selbyville Public Library
 South Coastal Public Library
 Sussex County Dept of Libraries
 Sussex Tech HS Library

WILMU LIBRARY LIBGUIDES CONTINUES TO GROW



Know what we know - find it in LibGuides!

Since its launch, the Library's LibGuides site has continued to expand. Now a total of twenty-five guides on a variety of topics, including course-specific guides, are available. Wilmington University Library LibGuides cover all major areas including Business, Education, Health & Nursing, Social & Behavioral Sciences and Technology.

LibGuides provides research assistance, library guides, and useful resources compiled by your Library. Use the subject-specific guides to help locate the best databases, websites and books on your topic.

View the Wilmington University Library LibGuides site now!

<http://libguides.wilmu.edu>

Recently added LibGuides:

- Arts & Sciences Guide
- Health Professions Guide
- DBA Orientation
- EdD Orientation
- ENG 320 Advanced Composition
- PSY 315 Group Dynamics
- NetLibrary eBook Collection
- Psychology Guide
- Technology Guide

NEW NURSING RESOURCES

We bring you two new databases to help support your research.

Ovid Nursing Full Text PLUS

Ovid is a comprehensive single source of premier current journal content from Lippincott, Williams & Wilkins. Coverage includes 33 research and 12 practitioner-oriented journals dating back to 1995.



R2 Digital Library - Full-text nursing e-books.

Medicine Library titles:

- BASIC & CLINICAL PHARMACOLOGY
- CHRONIC PAIN
- CURRENT DIAGNOSIS & TREATMENT PEDIATRICS
- RESOLVING ETHICAL DILEMMAS



Nursing Library titles:

- ADVANCING YOUR CAREER
- ESSENTIALS OF NURSING RESEARCH
- EVIDENCE-BASED NURSING GUIDE TO DISEASE MANAGEMENT
- HOLISTIC NURSING
- PROFESSIONAL GUIDE TO DISEASES

EBSCOHOST MAKES NEW INTERFACE ENHANCEMENTS



EBSCOhost adds new features to improve the user experience.

EBSCOhost has made some enhancements to their interface for a better user experience. Below are some of the changes that took place.

- Limiters and the date slider have moved from the right to the left column beside the Result List, which is a more intuitive position for these popular features, consolidating all the ways users can refine and work with their results in one area.
- Detailed record pages are more streamlined, links to full text, your link resolvers, Interlibrary Loan, etc., are more prominently displayed on the right.
- Users are able to select multiple clusters and source types when managing results.
- There is an enhanced PDF Viewer, Content Viewer, HTML Full Text, etc.
- A “breadbox” on the top left shows users which limiters, expanders and source types have already been selected.
- Simpler overall interface elements increase the intuitiveness of the user experience.

SAGE OFFERS SEVERAL ONLINE RESOURCES

The Library provides users with access to a number of resources from SAGE.



SAGE Journals Online

Provides access to approx. 460 Peer-Reviewed Full-Text Journals published by Sage covering the disciplines of Business, Humanities, Social Sciences, Science, Technology, and Medicine.

In addition to SAGE Journals Online, SAGE Reference Online brings you:

Research Methods & Evaluation

Encyclopedia of Measurement and Statistics

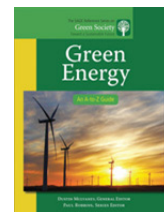
Encyclopedia of Survey Research Methods

NEW! SAGE Green Society

The newest resource by SAGE is Green Society. It explores all aspects of environmentalism from energy, business, and food to technology, education, culture and much more.

Titles include:

- Green Energy
- Green Business
- Green Consumerism
- Green Politics
- Green Cities
- Green Food



LOCATIONS

Web: www.wilmu.edu/library

Contact: www.wilmu.edu/library/feedbacklib.aspx

Phone: 1-800-451-5724

New Castle Main Library
(302) 356-6879

Wilson Graduate Center
Resource Room
(302) 295-1177

Dover Library Center
Dover Site
(302) 734-2594

Betze Library, DTCC
Georgetown Site
(302) 856-9033

Burlington County
College Library
(856) 222-9311 ext. 2021

Cettei Memorial Library,
Salem Community College
(856) 351-2681

Cumberland County
College Library
(856) 691-8600 ext. 263

McGuire Air Force Base
Library
(609) 754-2079

Hours of operation of each site are available from the [Locations & Hours](#) webpage.

RESOURCE FOCUS: STREAMING VIDEOS

A number of new library resources offer streaming videos. [Click here to access the Library Electronic Databases now!](#)



American History in Video

Produced in cooperation with A&E Television Networks, this streaming video series is the only source for complete online newsreel streams of United News and Universal Newsreel; documentaries and series' from The History Channel® and others.

The New England Journal of Medicine Videos In Clinical Medicine

A collection of approximately thirty medical-related videos. Simply type "videos" in the search box.

Encyclopedia Britannica Online Video Collection

Full-length videos providing in-depth coverage. Subject areas include, Science, Geography, World Studies, American History and Arts.

Business Source Complete Business Videos

BSC offers videos on Business-related topics from Harvard Business School Faculty Seminar Series.

Opposing Viewpoints In Context

Streaming video, audio and podcasts Opposing Viewpoints In Context offers a variety of video and audio streams. Use the advanced search option to find streaming videos within this database.



The NEW ENGLAND
JOURNAL of MEDICINE



 Business Source® Complete



LIBRARY MISSION

The mission of the Wilmington University Library derives from the mission and nature of the University. The Library supports the delivery of academic programs by making available to the University community the resources and methods to access information. The goal of the Library is to provide students with the resources and skills necessary to become self-directed life-long learners. The Library strives to accomplish this by:

- providing information resources and services that benefit our students
- facilitating access to information by providing multiple formats and by linking to other networks and information resources
- conducting Library orientation sessions for both undergraduate and graduate students
- promoting the use of problem solving, critical evaluation, and decision making skills in understanding and locating information in all formats.