

WILMINGTON UNIVERSITY LIBRARY

# Library News

## MESSAGE FROM THE DIRECTOR

Welcome to the Fall 2009 Library Newsletter. This Fall the Library begins the planning phase for several new initiatives, foremost the migration of our in-house library system to the statewide Delaware Library Catalog. As more materials move from print to online format, a review of how library space is utilized becomes essential. You will hear more about this in the near future. To further help you succeed in your studies, the Library now offers several new online resources including Business Source Complete, Books-In-Print, and the online video series "American History in Video". "Library Thing" is a new social networking tool that enables you to not only view but discuss new books added to the Library's collection. "LibGuides" is a new tool useful for your research. Finally, Fall 2009 Library events continue to provide you with ongoing opportunities to meet and hear from interesting authors, poets, and others. Please take a few minutes to read about all the exciting Library news.

- Jim McCloskey, Library Director

## LIBRARY SURVEY- THE RESULTS ARE IN!

Used any Library's web-based resources in completing assignments?

Response	Value	Freq.	Percent	Cum. Percent	Valid Cum. Percent	Graph
Very Often	1.0	283	35.0	35.0	35.2	
Often	2.0	257	31.8	66.8	32.0	
Occasionally	3.0	197	24.4	91.2	24.5	
Never	4.0	66	8.2	99.4	8.2	

103 Total Faculty Responses

Response	Frequency	Percent	Mean: 2.1
In-person	16	15.7	
Online	46	45.1	
Both	28	27.5	
Missing	12	11.8	

800+ Total Student Responses

View more survey results from our LibGuides page @ <http://wilmu.libguides.com>

### LIBRARY NEWS

- Local Author, Nancy E. Lynch, to visit WU
- New Library Research Databases
- Library Catalog Transition
- Recession Reading List
- Resource Focus: TCLC

### INSIDE THIS ISSUE

- Library Book Club Event.....2
- Get To Know The Staff .....2
- Rehoboth Writers Series.....3
- NetLibrary eBooks.....4
- Library Retreat.....4
- New LibGuides Website .....4
- New Research Databases.....5
- Recession Reading List.....5
- LibraryThing.com.....6
- Resource Focus.....6



## LIBRARY BOOK CLUB TO HOST LOCAL AUTHOR NANCY E. LYNCH

**Vietnam Mailbag: Voices From the War, 1968-1972**

In celebration of Veterans Day, the Library has invited local author Nancy E. Lynch to discuss her book, *Vietnam Mailbag: Voices from the War, 1968-1972*. In *Vietnam Mailbag*, Nancy tells the story of troops at war – through the letters they wrote to her a generation ago and through a series of moving interviews with veterans who now share their views on how the Vietnam experience shaped their lives.

For more information please visit, [www.vietnammailbag.com](http://www.vietnammailbag.com)

Nancy E. Lynch  
*Vietnam Mailbag*

**Location:** Wilmington University  
DAC Odeum, Room 309

**Date:** Monday, November 9th

**Time:** 5:30pm - 7:30pm

**Admission:** Free and open to all

Hope to see you there!

*“The love of learning, the sequestered nooks, and all the sweet serenity of books.” ~Henry Wadsworth Longfellow*

The Wilmington University Library has been selected by Alexander Street Press to receive a free subscription to the online video series *American History in Video*. Produced in cooperation with A&E Television Networks, this series is the only source for complete online newsreel streams of United News and Universal Newsreel; important documentaries and series from The History Channel® and others. Teaching tools include custom clip-making, shareable playlists, course folders, and more.

[ahiv.alexanderstreet.com](http://ahiv.alexanderstreet.com)



## GET TO KNOW THE LIBRARY STAFF

Featured Staff Member: James Bradley



James Bradley joined the Library staff in Fall 2003 as the Instruction and Reference Librarian. He graduated from Penn State University with a degree in Finance. Later he attended graduate school and earned his Master’s in Library and Information Science from Simmons College.

James primarily teaches Library orientations, helps students one-on-one, and answers questions while covering the front desk. “In our field, what I do is called “Bibliographic Instruction” and it’s a great fit for me. I enjoy teaching, public speaking, and computers so I eventually found my niche while studying Library Science.”

“I really enjoy teaching students both individually and in groups. Sometimes you can make a big difference in a short period of time. Our students are often under tight deadlines so they need just enough information to get them up to speed.” Over the years James feels that “the Library has become more visible and active in the larger university community, which is great because we can impact more students when everyone is aware of our services.”

Looking towards the future, James believes the Library will provide more upfront training and virtual services so that students can work remotely and independently. “We are currently working on video or simulated training modules so that students can visually learn how to conduct library research.”



*Speakers from the Series included:*

*John Wenke, PhD, Professor of Literature, Salisbury University*  
*Judith Reveal, independent writer of nonfiction and indexer*  
*Maribeth Fisher, Novelist (right)*



## ACCESS RESEARCH DATABASES THROUGH WEBCAMPUS

Both students and faculty have access to Library databases through WebCampus, the Wilmington University portal.

Simply log in to [WebCampus](#) using your User Name and Password. This information can be found on your registration/class enrollment form.

Once you have logged in, locate the main menu on the left. Click 'Research', then 'Library Databases.' This link guides you to the full array of Library Research Databases available through Wilmington University.

Having trouble gaining access? Call the Library, 1-800-451-5724.

## REHOBOTH BEACH WRITERS SERIES A SUCCESS

### Delmarva Discussions Series: Finding The Writer Within

In celebration of National Library Week, the Wilmington University Library in conjunction with the Rehoboth Beach Public Library sponsored a Delmarva Discussions series on Finding the Writer Within: Writing Your Personal Memoir.

Sessions were held April 4th, 18th and May 2nd at the Wilmington University Rehoboth Beach site. The sessions included tips on how to use letters and journals to write a memoir, explorations of the importance of evoking place and time in a memoir writing, and writing exercises.

Each session in the series featured a different memoir. If you are interested in writing your own memoir, check out the ones covered in the writers series.

[One Writer's Beginnings](#) by Eudora Welty

[This Boy's Life: A Memoir](#) by Tobias Wolff

[Sweet Summer: Growing Up With and Without My Dad](#)

by Bebe Moore Campbell

We would like to thank the Rehoboth Beach Public Library, the Delaware Center for the Book and the Delaware Division of the Arts for their partnership in this event.



## NATIONAL DAY ON WRITING- OCT 20TH

Join the Library as we celebrate the [National Day on Writing!](#) Selected writers will present their pieces (to be considered, entries must be received by Oct. 9th). Refreshments will be served, all are welcome to attend.

Tuesday, October 20, 2009  
 6:00pm in the Library of the Peoples Building, New Castle  
 Submit your work to the Wilmington University Gallery [galleryofwriting.org/galleries/138114](http://galleryofwriting.org/galleries/138114) and click on [Contribute to This Gallery](#).

For more information, contact Kate Cottle or Nicole Karam.

## LIBRARY CATALOG TRANSITION

This winter the Library will be moving our Library Catalog, previously called WebCat, to the statewide Delaware Library Catalog System.

What will this mean for library users?

- Users will see a new interface when searching for library materials
- Users will have the ability to also search within other public and academic library catalogs
- Users will be able to request and borrow materials from other Libraries

For more information about the Delaware Library Catalog please visit, <http://lib.de.us>

## PSYCBOOKS ADDS FORTY NEW TITLES

PsycBOOKS added 40 new titles to its coverage list in June and July 2009. Of the titles added, 3 were APA books and 37 were designated classic books. Classic books are landmark titles in psychology and are selected by APA experts.

As of August 2009, there are 1,782 books and 27,395 chapters in PsycBOOKS. The database and the list are updated monthly.

For a full list of titles available from PsycBOOKS please visit, [www.apa.org/psycbooks/covlist.html](http://www.apa.org/psycbooks/covlist.html)

**PsycBOOKS®**

## NETLIBRARY E-BOOKS

Our eBook collection is one of the many resources the Library offers. The collection is provided through NetLibrary, a database with more than 5,000 eBooks covering a variety of subject areas.

To access our eBook collection:

Search for books using the [Library's Online Catalog, WebCat](#)

Browse the eBooks by clicking on the NetLibrary link from the list of Research Databases. The [In Our Collection](#) option will list all available eBooks. Off-campus users will need to log into WebCampus before accessing NetLibrary.



## LIBRARY RETREAT

Greenbank Mills in nearby Prices Corner was the setting for a summer Library staff retreat. The opportunity for staff to dialog about the Spring 2009 user survey and what the future holds for library services helped us further our theme of teamwork. A strong library staff leads to better service to the users of the Library. Useful in planning for this part of the retreat was the library book, [Creating Effective Teams](#) by Susan A. Wheelan.

According to a survey conducted in the UK by NetLibrary, most libraries intend to increase the acquisition of eBooks in the coming years.

The highlights: (300 libraries responded)

3/4 of academic libraries intend to increase eBook collections

1/2 of public libraries intend to increase eBook collections

85% of publics were interested in fiction eBooks

65% of publics were interested in building an audiobook collection

For more information on our eBook collection, call the Library or view the NetLibrary eBook tutorial here, [www.wilmu.edu/Library/netlibrary.pdf](http://www.wilmu.edu/Library/netlibrary.pdf)



## LIBGUIDES: STREAMLINING YOUR RESEARCH

<http://wilmu.libguides.com/content.php?pid=41588>

Research assistance, Library guides, and useful resources compiled by your Library. Use the subject-specific guides to help locate the best databases, websites and books on your topic. Know what we know - find it in LibGuides!

## NEW LIBRARY RESEARCH DATABASES

**Books in Print** - Updated weekly, Books in Print records describe over four million records for in-print, out-of-print, forthcoming books, audios, and videos from North American publishers and U.S. distributors and wholesalers with optional reviews.



**Business Source Complete** - This business database provides the leading collection of bibliographic and full text content. Indexing and abstracts for the most important scholarly business journals back as far as 1886 are included. In addition, searchable cited references are provided for more than 1,300 journals.



### Westlaw Paralegal Database

Westlaw Paralegal Database contains information on accessing cases, statutes, administrative materials, forms, court documents, and public records.

The database is accessible to Legal Studies and Education Law students by using log-in information provided to the students.

Others wishing to use the database may access it by visiting the Library. A Library staff member will have log-in information.

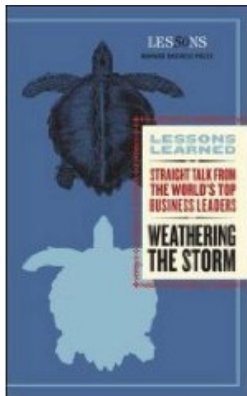
With the addition of this database we have discontinued our subscription to LexisNexis and Westlaw Campus Research.



*"In the case of good books, the point is not how many of them you can get through, but rather how many can get through to you." ~Mortimer J. Adler*

## RECESSION READING LIST

In these difficult economic times everyone could use some financial guidance. We have put together a list of helpful reads to get you through this recession and back on your feet.



### Weathering the Storm (Lessons Learned)

by Fifty Lessons, Harvard Business School  
HD 31 .W356 2009

### The Upside of the Downturn: Ten Management Strategies to Prevail in the Recession and Thrive in the Aftermath

by Geoff Colvin  
HD 31 .C6146 2009

### A Failure of Capitalism: The Crisis of '08 and the Descent into Depression

by The Honorable Richard A. Posner  
HB 3722 .P67 2009

The Housing Boom and Bust by Thomas Sowell HG 2040.25 .S69 2009

Once in Golconda: A True Drama of Wall Street 1920-1928 by John Brooks  
HG 4572 .B7 1999

### Recessions and Depressions: Understanding Business Cycles

by Todd Allen Knoop HB3711 .K63 2004

Books listed above are available from the Wilmington University Library. For more information and resources on the recession visit [heretohelp.us](http://heretohelp.us)



## LIBRARY MISSION

The mission of the Wilmington University Library derives from the mission and nature of the University. The Library supports the delivery of academic programs by making available to the University community the resources and methods to access information.

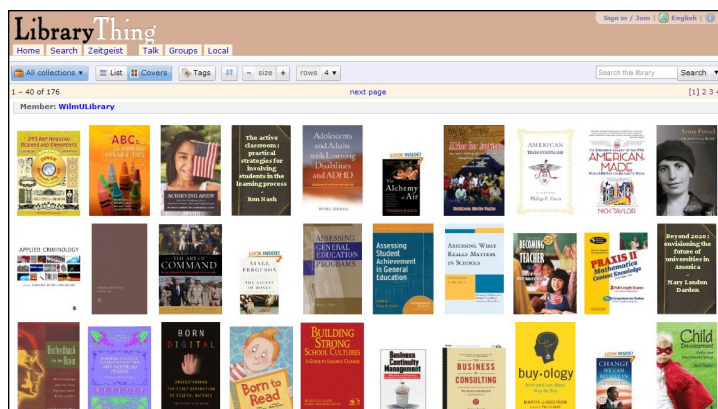
The goal of the Library is to provide students with the resources and skills necessary to become self-directed life-long learners. The Library strives to accomplish this by:

- providing information resources and services that benefit our students.
- facilitating access to information by providing multiple formats and by linking to other networks and information resources.
- conducting Library orientation sessions for both undergraduate and graduate students.
- promoting the use of problem solving, critical evaluation, and decision making skills in understanding and locating information in all formats.

## LIBRARYTHING.COM

LibraryThing.com is a new and easy way to view the Library's latest book additions. Our collection continues to grow year by year, and now you can discover our most recent books online with LibraryThing. Simply visit the site below to see all the new titles the Library has to offer.

[www.librarything.com/catalog/WilmULibrary](http://www.librarything.com/catalog/WilmULibrary)



## WILMINGTON UNIVERSITY LIBRARY

Web: [www.wilmu.edu/library](http://www.wilmu.edu/library)

Email: [librarycontact@wilmu.edu](mailto:librarycontact@wilmu.edu)

Phone: 1-800-451-5724

**New Castle Main Library**  
(302) 356-6879

**Wilson Graduate Center Resource Room**  
(302) 295-1177

**Dover Library Center**  
(302) 734-2594

**Betze Library, Georgetown**  
(302) 856-9033

**Burlington County College Library**  
(609) 894-9311 ext. 2021

**Cettei Memorial Library, Salem County**  
(856) 351-2681

**Cumberland County College Library**  
(856) 691-8600 ext. 236

Hours of operation of each site are available from the Wilmington University Library website.

## RESOURCE FOCUS: TCLC



As a member of TCLC (Tri-State College Library Cooperative), students and faculty may access and obtain borrowing privileges at academic libraries throughout Pennsylvania, New Jersey and Delaware.

In order to gain privileges, a letter of introduction must be completed.

Patrons may obtain a [letter of introduction](#) by downloading the PDF form located on the Library services webpage or by contacting the Library.

Currently there are forty-seven member institutions of TCLC.

For a full list of participating TCLC academic libraries, visit:

<http://www.tclclibs.org/members>

The mission of the Tri-State College Library Cooperative is to advance, promote, and develop the best possible research and scholarship on the part of students and faculty members of participating colleges and research institutions and other persons interested in the educational process.

To these ends, the Cooperative shall facilitate the exchange of information among participants, encourage participants to share their library facilities, develop mutually supportive collection development/resource sharing programs, maintain and encourage communication and cooperation among the participants, and develop other mutually advantageous programs and activities.