

Library News

We help you learn

SPRING/SUMMER 2011

WILMU.EDU/LIBRARY

VOLUME 5, ISSUE 2



MESSAGE FROM THE DIRECTOR

Welcome to the 2011 Spring Semester! All of us in the library are committed to offering quality services and resources to the University community. In this issue you can read about the strides we have made in transforming our collection through ebooks such as Credo Reference, Statesman's Yearbook and Annual Reviews. We also have listened to your requests for extending Juvenile Literature borrowing terms to 14 days. Several programs are planned or have taken place including our Veterans Day commemoration and our Ribbon-Cutting Ceremony for the renovated Library Commons in New Castle. So much is happening. We invite you to come hear more and meet our staff on April 14th during National Library Week. Our goal, as always, is to help you learn!

- Jim McCloskey, Library Director

WHAT'S NEW

- National Library Week April 10th – 16th
- Library adds six new print periodical titles
- Annual Reviews database makes improvements
- Children's books loan period extended to 14 days
- New database added – Credo Reference
- Annual Survey contest winner announced
- 'Outcasts United' chosen for FYE course
- Locating dissertations and theses
- Individual research help is available

INSIDE THIS ISSUE

Celebrate National Library Week	2
Get To Know The Library Staff	2
New Periodical Titles Added	3
Library Survey Contest Winner	3
LibGuides Research	4
Library Commemorates Veterans Day	4
The Statesman's Yearbook Online	5
Resource Focus: Credo Reference	6
In the News: Students and Libraries	6

CELEBRATE NATIONAL LIBRARY WEEK | APRIL 10TH - 16TH, 2011

Library invites you to the Ribbon-Cutting Ceremony of the new Library Commons and Café.

National Library Week is an annual celebration of the contributions of our nation's libraries and librarians. Libraries are places for new beginnings. Whether you are getting your first library card, learning new computer skills or planning a trip, the library is the place where your story begins.

This National Library Week, join the Wilmington University Library and Create Your Own Story @ your library.

We invite the Wilmington University community to be part of the Ribbon-Cutting Ceremony for the new Library Commons and Café.

We welcome Annie Norman, Director of the Delaware Division of Libraries, to participate in the ceremony. Please come out and see the new renovations made to the Library.

The event will be held in the New Castle site Library, Peoples Building on the morning of Thursday, April 14th. Refreshments will be served. Hope to see you there!

For more information on National Library Week visit www.ala.org/nlw



Join us for the
Ribbon-Cutting Ceremony
for the new Library
Commons and Café
Thursday, April 14th
New Castle, Peoples Building

DID YOU KNOW?

The Library subscribes to a number of newspapers, both in print and online.



Current Library subscriptions:

- Wilmington News Journal
- Delaware State News
- The Philadelphia Inquirer
- The Wall Street Journal
+ online access from ProQuest
- The New York Times
+ online access from ProQuest
- The Washington Post
+ online access from ProQuest

We also hold 3 months of back issues in print of each newspaper to help support your research.

Drop in the Library Café and catch up on the latest news while enjoying a cup of coffee!

GET TO KNOW THE LIBRARY STAFF

Featured Staff Member | Barbara Beard



Barbara began working for the University in January 2001. In September of 2008, she joined the Library as a Library Assistant. Wilmington University is also where Barbara earned her Bachelor's of Science degree. When asked what she likes best about working in Library, she replied "what I enjoy most is working with the students, whether it's to help locate articles or find books." She also likes helping with special library events and library book displays.

A part of Barbara's job is managing the Library's work study students. In doing this, she is able to see their academic journey and it is very rewarding to her to see them graduate. Over the years working in the Library, Barbara has witnessed many changes take place. From the renovations made to the Library this past summer to resources transitioning from print to online, she is very pleased with the Library's improvements.

Looking toward the future, Barbara hopes to see even more of an expansion of electronic resources. The affiliation with the Delaware Library Catalog is something she feels will further provide the resources necessary for our students in the years to come.

NEW PERIODICAL TITLES ADDED

The Library recently added several new titles to the print collection.

Digital Video Magazine Monthly



The New Yorker Weekly



UTNE Reader Bi-Monthly



Layers Magazine Bi-Monthly

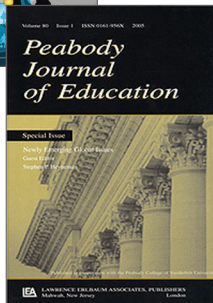


Wired Magazine Monthly

Available online from Computers & Applied Sciences Complete

Peabody Journal of Education Quarterly

Available online from EbscoHost

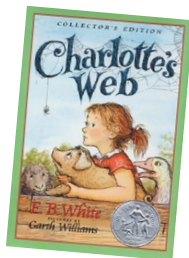


Want to know if the Library subscribes to a specific magazine or journal online? Look it up using the [Library Journal Locator!](#)

CHILDREN'S BOOKS NOW CARRY A 14 DAY LOAN PERIOD

In response to our students' request, the Library has changed the loan period for Juvenile books from 7 days to 14 days.

Have a suggestion or comment for the Library? We always welcome any feedback you may have. Please submit it [here!](#)



LIBRARY SURVEY CONTEST WINNER



Congratulations to student Clare Matis for winning the Best Buy gift card. Clare was one of many students and faculty to complete the annual Library Survey. We thank everyone that took the time to take the survey. The survey results gathered will be used to better improve your Library. The survey results will be available to view in summer 2011.

ANNUAL REVIEWS MAKES INTERFACE IMPROVEMENTS

The Annual Reviews database has made many changes to their interface. Check out the new and improved database now [Click for access!](#)



ANNUAL REVIEWS
A NONPROFIT SCIENTIFIC PUBLISHER

Annual Reviews database offers full-text articles covering the fields of law, social sciences, psychology, sociology and more. The database synthesizes the vast amount of primary research literature and identifies the principal contributions in each of these disciplines.

Full-text Journal Subscriptions available from Annual Reviews:

- Anthropology
- Clinical Psychology
- Environment & Resources
- Law & Social Science
- Political Science
- Psychology
- Public Health
- Sociology

INDIVIDUAL RESEARCH HELP IS AVAILABLE!

You can schedule a research session for one-on-one consulting with a librarian. These sessions can help orient you to quality library resources. Click below to fill out the Library Assistance Form and schedule your session today!



Need extra Library help?

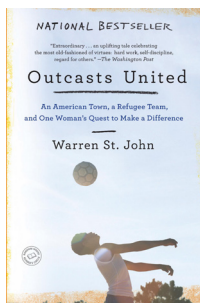
One-on-one assistance is available from any site.

[Click here to request a session today.](#)

'OUTCASTS UNITED' CHOSEN FOR NEW FYE BOOK

Are you a soccer fan? Have you ever wondered why this game is so popular in so many countries? Join the students of FYE101 in reading *Outcasts United*, written by Warren St. John. *Outcasts United* was named a finalist for the 2010 PEN/ESPN Award for Literary Sportswriting. Read more about it @ <http://www.outcastsunited.com>.

Outcasts United is the story of a team of refugee boys, the remarkable woman who coaches them, and the town where they live, a once-sleepy southern hamlet that has been upended by the process of refugee resettlement. It's a story about the challenges posed by our quickly changing world, and one that reminds us of what is possible in this country when we put our values in action.



LIBGUIDES SUPPORTS YOUR RESEARCH

LibGuides continues to grow across the curriculum.



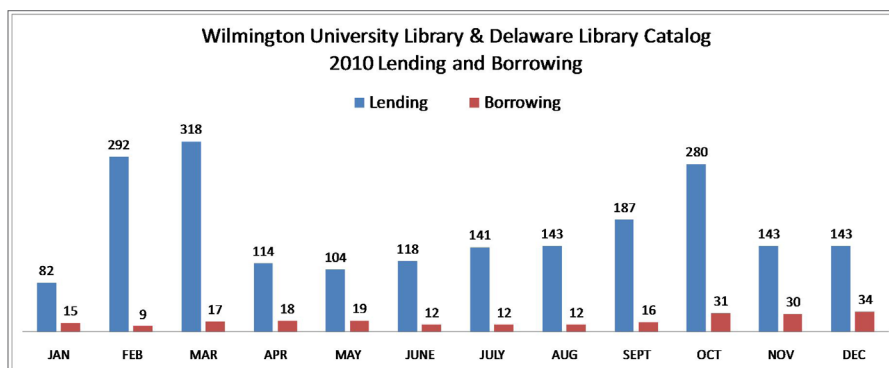
What is a LibGuide? LibGuides are sets of web pages for research assistance, subject guides, and useful resources compiled by librarians at Wilmington University Library. You may find LibGuides for specific courses or on general topics, while other LibGuides explain about different areas of the Library. The "Library" tab in all Blackboard course pages now links to either College level or course specific LibGuides that help you start your research and get going in completing your assignments.

Check out the [Wilmington University Library LibGuides page now!](http://libguides.wilmu.edu)

DELAWARE LIBRARY CATALOG IMPROVES CIRCULATION



Since joining the Delaware Library Catalog, borrowing and lending has increased immensely for the Wilmington University Library.



LIBRARY COMMEMORATES VETERANS DAY

Many gathered in the Library to hear the stories of WWII veterans.

On Thursday, Nov. 11th, the Library cosponsored a Veterans Day event with the College of Arts & Sciences. Four World War II veterans shared with more than 50 attendees their experiences serving in both the European and Pacific theaters of war. The event guest speakers were George Reynolds, Howard McKeever, John Lewis and Irwin Shmuckler. Their stories were very moving, and since some of them were in their eighties, it was important to hear them.

This event took place in the Library's new Café. Many Wilmington University students were present, and additional library users stopped by to listen for a few moments. Feedback was very positive and will most likely lead to more programming in the Library over the coming years.



View more photos of the event on the [Wilmington University Library Flickr page!](#)

THE STATESMAN'S YEARBOOK ONLINE 2011

Database improves design and enhances navigation.

The Statesman's Yearbook, published continuously since 1864, remains the first point of reference for anyone needing reliable, concise information on any country in the world, including population of various states and countries, officials, exports, constitutions, governments, diplomatic representatives, religion, finance, and basic histories.

NEW FEATURES

[ACCESS THE STATESMAN'S YEARBOOK NOW!](#)

Improved Navigation

- Improved interface with new homepage with enhanced navigation tools, making it easier to find content
- Take a look at the supplementary material available: Help, Browse, Resources, Fact Sheets, Essays and Sample Country
- Dynamic searching of countries plus dropdown list of countries
- Browse, Key word, Quick and Advance Searching tools

New Content

- The Editor's Spotlight – each month our editor Dr Barry Turner focuses on a pivotal event in history and discusses its impact on the world at the time and its relevance today. This month, he discusses German Reunification.
- Economic Overviews for every country of the world
- Natural Disasters Timeline - new to the Chronologies page
- Top 50 Think Tanks – new to the International Organizations Page
- A new Resources page with quick links to a wealth of material to help you get the most out of The Statesman's Yearbook Online, including information on its history and the current editor, additional content, promotional materials, FAQs and Help

TRYING TO LOCATE DISSERTATIONS AND THESES?



Did you know that the Library provides access to almost 600 Wilmington University dissertations and theses dating back to 1995? The full-text PDF dissertations can be downloaded through the [Dissertations & Theses](#) database provided by ProQuest.

Note: To search just within the full-text Wilmington University Dissertations and Theses, make sure to check the box next to 'Full text documents only' before performing your search.

ProQuest's Dissertations & Theses database also provides Abstracts and Previews of dissertations and theses from colleges all across the world! Purchasing a full-text download or bound copy of a dissertation or thesis is also made available through the database.

NEW!

WilmU dissertations have gone paperless! The library recently began adding digital copies of new Wilmington University dissertations to CONTENTdm, an institutional repository system. These digital files are cataloged and searchable through the Delaware Library Catalog as well as through WorldCAT.org, making these digital dissertations discoverable through search engines such as Google Scholar.

Check out CONTENTdm online now!

LOCATIONS

Web: www.wilmu.edu/library

Email: www.wilmu.edu/library/feedbacklib.aspx

Phone: 1-800-451-5724

New Castle Main Library
320 North DuPont Hwy
New Castle, DE 19720
(302) 356-6879

**Wilson Graduate Center
Resource Room**
31 Reads Way
New Castle, DE 19720
(302) 295-1177

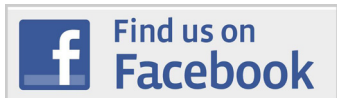
Dover Library Center
Dover Site, Building B
3282 North DuPont Hwy
Dover, DE 19901
(302) 342-8620

Betze Library, DTCC
Georgetown Site
Seashore Highway
Georgetown, DE 19947
(302) 856-9033

For support at other sites,
please call 1-800-451-5724

Hours of operation of each
site are available from the
[Locations & Hours](#) page.

[Check out our page here!](#)



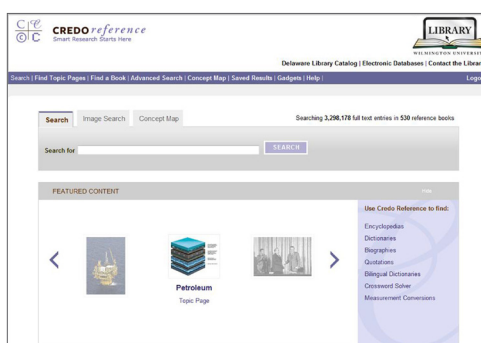
RESOURCE FOCUS: CREDO REFERENCE

Introducing Credo Reference -- Smart Research Starts Here



The Library now provides access to Credo Reference. Credo is a vast, online reference library, providing access to the full text of hundreds of highly regarded and popular titles. And Credo brings the facts alive with images, sound files, animations, videos and much more. Find speedy, simple answers and authoritative, in-depth articles.

Credo Reference contains dictionaries, bilingual dictionaries, thesauri, encyclopaedias, quotations and atlases, plus a wide range of subject-specific titles covering everything from accounting to zoology, via maps, math, management, martial arts, media studies, medicine, mountains, moons, music, multimedia, mythology.

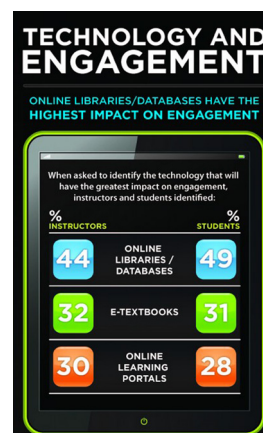


Whatever you need to find - facts, words, concepts, people, places or sayings - you'll find it in Credo. All cross-referenced, all reliable and all in one place. For more information about using the Credo Reference database, please visit <http://help.credoreference.com>

[Access Credo Reference NOW!](#)

IN THE NEWS: STUDENTS AND LIBRARIES

According to a survey released last week by Cengage Learning, *87% of students feel that online libraries and databases have had the most significant impact on their overall learning.* The survey, entitled “[Instructors and Students: Technology Use, Engagement and Learning Outcomes](#)” conducted by Eduventures, identifies a new generation of students and highlights pressures and obstacles hindering student success. This is the second Cengage Learning/Eduventures survey designed to uncover how educational technology impacts overall student engagement and learning outcomes.



LIBRARY MISSION

The mission of the Wilmington University Library derives from the mission and nature of the University. The Library supports the delivery of academic programs by making available to the University community the resources and methods to access information. The goal of the Library is to provide students with the resources and skills necessary to become self-directed life-long learners. The Library strives to accomplish this by:

- providing information resources and services that benefit our students
- facilitating access to information by providing multiple formats and by linking to other networks and information resources
- conducting Library orientation sessions for both undergraduate and graduate students
- promoting the use of problem solving, critical evaluation, and decision making skills in understanding and locating information in all formats