

Spring/Summer 2009



WILMINGTON UNIVERSITY
ROBERT C. & DOROTHY M. PEOPLES LIBRARY

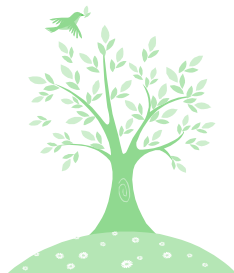
Library News



We Help You Learn

Library News:

- Visit from author and poet Nikki Giovanni
- Celebrating WU 40th Anniversary
- Book Club Event
- The Big Read 2009
- Library Survey
- New! Library QuickGuides



Inside this issue:

Meet Nikki Giovanni	2
Get To Know The Staff	2
New Staff Member	2
New Library Databases	3
Library QuickGuides	3
Database Access Through WebCampus	3
Book Club Event	4
Archive Display	4
The 2009 Big Read	4
Volunteering	5
Information Literacy	5
Resource Focus	6

Message from the Director

Welcome to the 2009 Spring semester at Wilmington University. The Library is committed to the University's "Vision 2015" Strategic Initiatives through development of our resources, instructional programs, and facilities. In this edition of the newsletter, read about new online access to authoritative reference sources such as Statesman Yearbook and American Law Yearbook. Also, read about how the library has developed course and subject-specific information literacy assessments for nursing, sociology, and business students. The Library is expanding extracurricular offerings to students through several programs including a "Personal Memoir Writing" workshop, a presentation by author and poet Nikki Giovanni, and book discussions. We invite you to participate in extracurricular activities through our partnerships with organizations such as the Delaware Center for the Book, Delaware Division of Services to Children, Youth and Families, and the Rehoboth Beach Public Library. The Library needs your feedback. Please take a few minutes to complete the annual library survey available on the university's website and let us know your thoughts. Thank you for giving us this opportunity to help you succeed!

- Jim McCloskey, Library Director

Personal Memoir Writing Workshop

In celebration of National Library Week, the WU Library in conjunction with the Rehoboth Beach Public Library will be sponsoring a Delmarva Discussions series on *Finding the Writer Within: Writing Your Personal Memoir*.

Sessions will include tips on how to use letters and journals to write a memoir, explorations of the importance of evoking place and time in a memoir writing, and writing exercises.

The writing series will be held at the Wilmington University Rehoboth Site located right on Rehoboth Avenue.

41 Rehoboth Avenue
Rehoboth Beach, DE 19971

The writing series is open to the public and is free of charge.

Sessions are scheduled for April 4th, April 18th, and May 2nd. They will run from 10:00am–12:00pm.

Please call the Wilmington University [Rehoboth Site](#) at (302) 227-6295 to register.



Celebrating
OUR FIRST **40** YEARS OF ACADEMIC EXCELLENCE



WU receives visit from Nikki Giovanni

Off the Page: An Evening with Nikki Giovanni



Delaware Division of Libraries and the Wilmington University Library have come together to bring you an evening with Nikki Giovanni. She is a world-renowned poet, writer, commentator, activist and educator. Nikki will be discussing her most recent book entitled *Bicycles*. The event will feature a 45-minute poetry reading and writing conversation by Giovanni, followed by a 15-minute Q&A session, and a one-hour book signing. The Library owns several Nikki Giovanni titles that are available to read. For more information about the event contact the Library or visit www.state.lib.de.us.

Nikki Giovanni
Bicycles: Love Poems

Location: Wilmington University
Doberstein Admissions Center
Auditorium

Date: Friday, February 6th

Time: 5:30pm

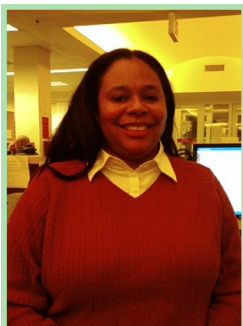
Admission: Free and open to all

Hope to see you there!



The Library Welcomes a New Staff Member

Please join the Library in welcoming our newest staff member, Tanya Moye.



This past fall Tanya joined the Library as a part-time Affiliate Librarian. Tanya currently works for the New Castle County Public Library System. For the past four years Tanya has been the Youth Services Librarian at the Bear Library. Tanya received her MLS degree from Clark Atlanta University in Georgia. With sixteen years of Library experience, she makes a wonderful asset to the Wilmington University Library Staff.

Welcome to Wilmington University Tanya!

Get To Know the Library Staff

Featured Staff Member: Kailah Neal



Kailah first started working for the Library as a summer intern within the Wildcats Summer Camp program. In 2003, Kailah started part-time as Library Assistant during the summer. Following her high school graduation in 2005, Kailah enrolled here at Wilmington University as a student pursuing a degree in Media Design.

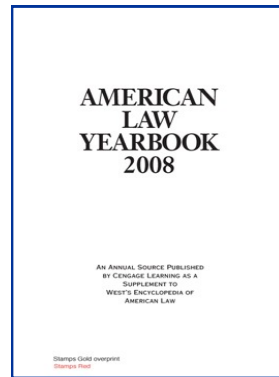
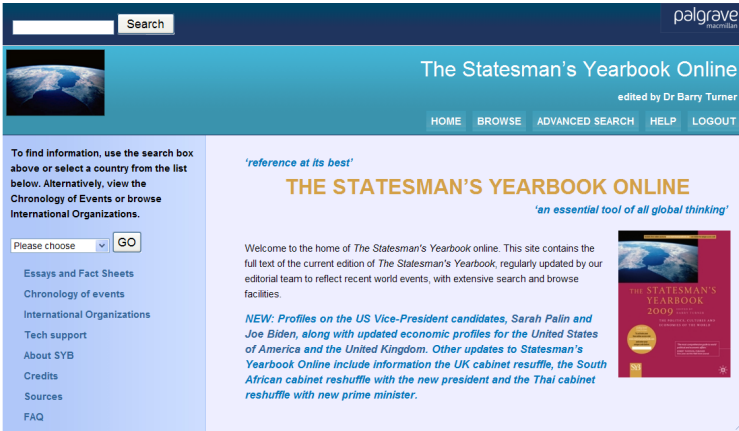
At that time she began working in the Library year-round. Kailah feels that working in the Library has been invaluable experience. It has helped tremendously with the transition from high school to college and with her college course work.

"As a student and as a Library employee I can see the very important role the Library plays in a student's educational development. I feel I am fortunate to have the opportunity to work here in the Library."



New Library Research Databases

The Library is pleased to offer two new databases to help support your research needs.



The Statesman's Yearbook

The Statesman's Yearbook, published continuously since 1864, remains the first point of reference for anyone needing reliable, concise information on any country in the world, including population, officials, exports, constitutions, governments, diplomatic representatives, religion, finance, and basic histories.

Gale Virtual Reference Library American Law Yearbook, 2008 -

Annual supplement to West's Encyclopedia of American Law that updates and expands the content with new topics, updates, biographies of prominent figures and government appointees, and other features. Each year's edition contains the full U.S. Supreme Court docket in addition to the non-Supreme Court cases.

To gain access to this and other databases simply log-in to your [WebCampus](#) account. From the main menu, select [Library Databases](#) from the [Research](#) category. Questions? Please call 1-800-451-5724 for assistance.

Library QuickGuides are now available online!

These handy Library reference guides are now available for download right from the Library website. Use the tri-fold guides to obtain information on various aspects of the Wilmington University Library.



Some available topics include:

- Online Research Databases
- Searching in EBSCOhost
- Selecting a Research Topic
- Off-Campus Access Guide
- Faculty Library Guide
- AND more...

Visit wilmu.edu/library/quickguides

Access Databases Through WebCampus

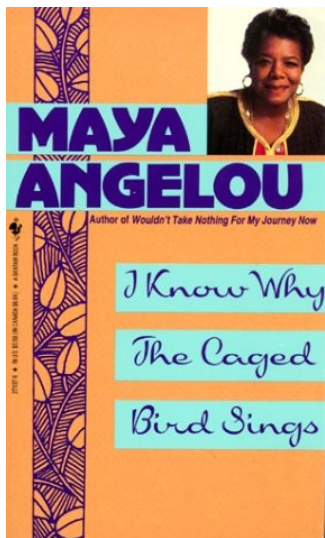
Both students and faculty now have access to all Library databases through WebCampus, the Wilmington University portal. Simply log in to WebCampus using your User Name and Password. This information can be found on your registration/class enrollment form. Once you have logged in, locate the main menu on the left. Click 'Research', then 'Library Databases.' This link guides you to the full array of Library research databases available through Wilmington University. Having trouble gaining access? Call the Library, 1-800-451-5724.





Celebrating the 40th Anniversary of Wilmington University

Library Book Club Event



In celebration of our 40th Anniversary we will be featuring Maya Angelou's award winning autobiography, *I Know Why The Caged Bird Sings*. This book is also celebrating it's 40th anniversary this year.

Please join the [Brown Bag Book Club](#) on April 24, 2009 at noon. All Library Book Club discussions are held in room 122 in the Library Peoples Building. Refreshments will be served. All are welcome!

In *I Know Why the Caged Bird Sings*, Maya Angelou describes her coming of age as a precocious but insecure black girl in the American South during the 1930s and subsequently in California during the 1940s.

A Glimpse Into the Past

Photographs and yearbooks are our connection to Wilmington University's forty-year history.



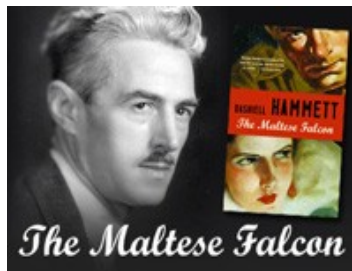
2009 The Big Read - The Maltese Falcon

[The Big Read](#) is an initiative of the Delaware Division of Libraries and the National Endowment for the Arts designed to restore reading to the center of American culture. The 2009 Big Read for the state of Delaware is [The Maltese Falcon](#).

Dashiell Hammett's *The Maltese Falcon* will be the center of a statewide reading initiative with a kickoff at the Third Annual Delaware Book Festival. [The Delaware Center for the Book](#) and its partners will coordinate and host book discussions, theatrical readings, film series, and scholar-led presentations and discussions. In addition, many public libraries will offer locally planned, supplementary programming to enhance and expand the reading experience.

Event In Your Area!

The New Castle County Bear Library will be featuring *The Maltese Falcon* as their February Book Club selection. The Book Club will meet on February 11th at 7:00pm. If you would like more information please call 302-838-3300.





The Library gains a pair of helpful hands

This past Fall the Library was fortunate to have the help of a student volunteer.

Monika Mushi, an international student from Tanzania, graciously offered to help out the Library over the past few months. Monika is a full-time student in the Criminal Justice program. She chose to attend Wilmington University after her older sister completed her Master's degree here. Monika wanted to volunteer in the Library because of her love for books and



Mount Kilimanjaro, Tanzania

libraries. The Library is very grateful for the time and effort Monika has put forth. Thank You!

Want to make a difference in your community?

Governor Jack Markell challenges all Delawareans to unite to create a better Delaware through volunteerism.

Volunteers can visit

www.BetterDelaware.org

to find volunteer opportunities throughout the state and are encouraged to record their hours of service.

YOUR VOLUNTEER EFFORTS COUNT!



LIBRARY SURVEY

Once again the Library will be conducting a survey to gain information about how we can better serve the University community.

Students, Faculty and Staff members are welcome to participate in the survey.

Look for web links in the month of April to fill out the Library Survey. The links will be posted on the Library homepage and on WebCampus.

Students who complete the survey may enter a drawing to win a **\$50 Best Buy gift card!** Just leave your contact information on the survey.

We thank you for your feedback!

Assessing Information Literacy through Blackboard

The Library and faculty team-up to enhance the information literacy skills of students.



Instruction Librarian James Bradley helping a student during a recent class.

Library staff have collaborated with faculty from the Nursing, Behavioral Science, and Business Divisions to develop subject-specific information literacy assessments. These assessments are geared toward helping students think critically about information and make more effective use of library resources. Sheila Sharbaugh's Spring 2009 distance Nursing 303 course, Lynda Fuller's Fall 2008 Business Communication 320 course and Johanna Bishop's Sociology 331 course had the assessments imported from Respondus, a tool that works with Blackboard to develop assessments. Results of these assessments provide data to help further refine the library's information literacy instructional role. Information literacy skills are assessed as part of both program and graduation competencies.

Interested in this for your course?

Please contact Library Director James McCloskey if you would like to explore using information literacy assessments in your course.



"The worth of a book is to be measured by what you can carry away from it."

- James Bryce





Wilmington University Library

www.wilmu.edu/library

1-800-451-5724

New Castle Main Library

(302) 356-6879

Wilson Graduate Center Resource Room

(302) 295-1177

Dover Library Center

(302) 734-2594

Betze Library, Georgetown

(302) 856-9033

Burlington County College Library

(609) 894-9311 ext. 2021

Cettei Memorial Library, Salem County

(856) 351-2681

Cumberland County College Library

(856) 691-8600 ext. 236

Hours & Locations

New Castle Main Library

Monday-Thursday
9:00am- 10:00pm
Friday 9:00am- 8:00pm
Saturday 9:00am- 5:00pm
Sunday 1:00pm- 8:00pm

Dover Library Center

Monday-Thursday
4:30pm- 7:30pm
(Additional hours available
by appointment)

Wilson Graduate Center Resource Room

Monday-Thursday
4:30pm- 7:30pm
(Additional hours available
by appointment)

Stephen J. Betze Library Georgetown

Monday-Thursday
8:00am- 10:00pm
Friday 8:00am- 4:30pm
Saturday 9:00am- 1:00pm

Burlington County College Library- NJ

Monday-Thursday
8:00am- 9:00pm
Friday 8:00am- 7:00pm
Saturday/Sunday
12:00pm- 5:00pm

Michael S. Cetti Memorial Library- Salem, NJ

Monday-Thursday
9:00am- 9:00pm
Friday 9:00am- 5:00pm
Saturday 8:00am- 12:00pm

Cumberland County College Library- NJ

Monday-Thursday
8:30am- 9:00pm
Friday 8:30am- 4:00pm
Saturday 10:00am- 2pm

*Hours vary according to the academic schedule, and special holiday hours will be posted.



Resource Focus

SerialsSolutions



360Link OpenURL Link Resolver

The premier OpenURL link resolver enables you to find specific items anywhere in our collection.

While searching within our Research Databases you may have come across a citation to an article you would like to read but didn't see the usual PDF or HTML icons. To check whether the article is available full-text in another database, click on the 360Link icon that appears with the article record, as shown below. You will be directed to the article if it is available.

If you need help with the Research Databases please call the Library.

45. [Advanced Practice Nursing and Conceptual Models of Nursing.](#)
By: Fawcett, Jacqueline; Newman, Diana M. L.; McAllister, Margaret. Nursing Science Quarterly, Apr2004, Vol. 17 Issue 2, p135-138, 4p; DOI: 10.1177/0894318404263268; (AN 12951975)

[Linked Full Text](#)

[Add to folder](#) | Relevancy:

[360 Link to Full Text](#)



The NEW ENGLAND JOURNAL of MEDICINE

Electronic access to The New England Journal of Medicine is now available online! Full journals are available from 1993 to the present. The Library has discontinued their print subscription.

To access The New England Journal of Medicine online, visit our [Library Databases by Title](#) page.

From off-campus simply log-in to your [WebCampus](#) account. From the main menu, select 'Library Databases' from the 'Research' category. Questions? Please call the Library at 1-800-451-5724 for assistance.



Researching the emerging radio-frequency technology? Check out our new online subscription to RFID Journal.