

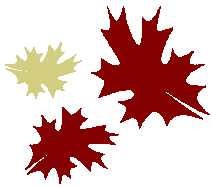


ROBERT C. & DOROTHY M. PEOPLES LIBRARY

We Help You Learn

Library News:

- **Welcoming New Library Staff Members**
- **New Library Databases**
- **Using WorldCat**
- **Delaware Book Festival**
- **Library Survey Results Are In**
- **Brown Bag Book Club**



Inside this issue:

New Staff Members	2
Get to Know the Staff	2
New Library Databases	3
Library Survey Results	3
Information Literacy	4
Accessing Library Databases	4
Group Study Space	4
Using WorldCat	5
Food and Drink Policy	5
Interlibrary Loan & Ariel	5
Electronic Resources	6
Pictures from the Past	6

Message from the Director

Welcome to the new academic year here at Wilmington University! Speaking of new, this issue of the Library newsletter highlights many new services and resources in the Library such as: access to more online journal articles and reference sources, expanded space for group study, the latest on the Library Brown Bag Book Club, Information Literacy news, and a staff feature article.

Perhaps most importantly, we have a number of new staff in the Library that I am pleased to introduce. Our staff members are our most important resource. Please take a moment to read about them. All of our staff are engaged in a variety of activities: ordering and cataloging books, managing collections, enhancing technology options for research, teaching students how to find information, answering questions at the Information Desk, processing interlibrary loan requests, and developing outreach programs. Our new staff members, joining those who have served the University for many years, look forward to working with students and faculty to advance the Library's mission and to "help you learn."

Stop in, give us a call or send us an email (<http://www.wilmu.edu/library/contactlib.html>), but by all means let us know how we can help you in your research and information needs.

- Jim McCloskey, Library Director

Welcome New Library Staff Members!

The Library is delighted to introduce to you our new additions to the Library staff.

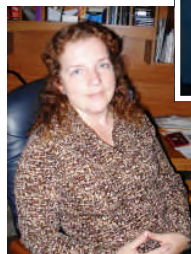
Adrienne Johnson



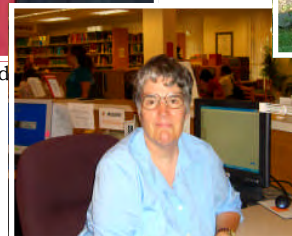
Craig Conrad



Michelle Reyes WGC



Melissa Jones—Dover



Patricia Moy



Meet the New Library Staff Members

Craig Conrad

Library Technician

Craig comes to Wilmington University from Widener University and besides working at the front desk, will oversee interlibrary borrowing and reserve operations as well as coordinate the print/electronic serials.

Barbara Beard

Library Assistant

Barbara has worked at Wilmington University since 2001 and will assist in the library's public and technical services areas.

Melissa Jones

Affiliate

Melissa is a native of Middletown and enrolled as a student at Wilmington University. She will provide assistance to library users at the Dover site Monday-Thursday evenings.

Patricia Moy

Affiliate

Patricia is a native of New York and graduated with Master's degrees in Library Science and Education. She will provide evening research assistance at the Main Library in New Castle.

Michelle Reyes

Affiliate

Michelle lives in Wilmington where she keeps busy with her family. She will provide evening research assistance at the Wilson Graduate Center.

Adrienne Johnson

Outreach Librarian

Although she has worked at Wilmington University for a year, Adrienne was only recently promoted to the new position of Outreach Librarian. Adrienne will oversee library services to distance students as well as all sites outside of New Castle, including New Jersey.



Get To Know the Library Staff

Featured Staff Member: **Milo Gibbons**

Milo Gibbons is a longtime library worker. When he started at Wilmington College in 1979, Milo reported to the director, Mary Lou Ponsell, and performed tasks in all phases of the library operations. As now, the library's goal was to help students and faculty with their research and teaching but back then there were no computers, only typewriters. In fact, Milo sees computerization as one of the biggest changes occurring in the library.

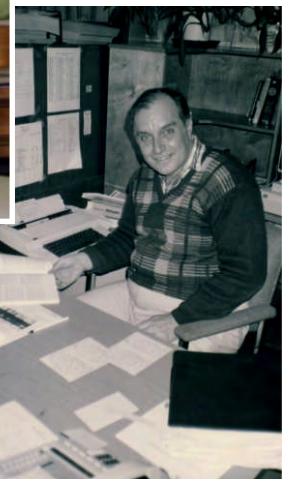
Milo attended St. John's College in Annapolis and received a Masters Degree in Philosophy from the University of Delaware. His love of reading and libraries led him to Wilmington College after having worked at a children's school.

Milo recalled a story about the library when it was housed in the current Maintenance Building near the front of the New Castle campus. It was in 1983 and there was a flood in the building. Water was knee-deep in the library and many books were ruined by the water. He stated that he has a real appreciation for the new library building which opened in 1995.

Milo is very service-oriented and loves to help students with questions, especially with interlibrary loan, a department where he has worked for over a decade. He loves the friendly atmosphere of staff in the library and looks forward to many more years of service.



Milo working in the Library over the decades.



New Library Databases

The Library is pleased to offer several new databases that help support your learning.

Education Research Complete offers the world's largest and most complete collection of full text education journals. Also covers areas of curriculum instruction as well as administration, policy, funding, and related social issues.

Digital Dissertations and Theses: A&I– Did you know that all Wilmington University dissertations are available to read online? With more than 2 million entries, this database is an authoritative resource for information about doctoral dissertations and master's theses. Titles available as PDF formats include free twenty-four page previews.

Mergent Online is a source for finding fifteen years' worth of company financial information, personnel information, assets, SEC filings, and histories for more than 10,000 publicly owned companies from around the world. In addition to providing information about companies, Mergent also provides tools for building comparative reports for companies from a variety of industries.

Opposing Viewpoints Resource Center provides access to current event topics—the facts, as well as the arguments, of each topic's proponents and detractors. Includes the complete text of the monograph series, “Opposing Viewpoints.”

Value Line Research Center provides detailed analysis and key financial ratios for stocks (including Small and Mid Cap) and mutual funds, and overviews of about 100 industry segments. The Survey is a comprehensive source of information and advice on approximately 1,700 stocks, more than 90 industries, the stock market, and the economy.

Access Science provides full access to over 7,100 articles, 115,000 dictionary terms, and hundreds of daily Research Updates in all areas of science and technology. Also includes over 2,000 biographies of leading scientists, weekly updates of breakthroughs and discoveries in science and technology, a science dictionary, and links to related websites.

PsycBOOKS, from the American Psychological Association (APA), is a database of more than 16,000 chapters in PDF from over 1,000 books published by APA and other distinguished publishers. The database includes most scholarly titles published by APA from 1953-2005. It also includes 100 out-of-print books and more than 400 classic books of landmark historical impact in psychology.



Mark your calendars for the second annual Delaware Book Festival to be held November 3rd at The First Heritage Park in Dover, DE. Authors, publishers and bibliophiles of all kinds will converge in Dover to celebrate reading, writing, and books for all ages. More information is available on the web at <http://www.debookfestival.lib.de.us/>

The Results Are In, Thanks For Your Feedback!

In the spring of 2007, the Library conducted its annual survey of library users. Three hundred and fifty eight students responded to survey. Below are some of the highlights. Thank you to all who took the time to complete the survey.

Fifty percent of all student respondents indicate using the library 2-4 times per week or at least on a weekly basis between noon and 8pm (75%).

Seventy-five percent of student respondents are satisfied with the facilities.

Over 80% indicated that the library provides the books and resources they need and that library staff respond courteously to their

needs. In addition, over 80% felt that the library provides them with the information skills needed for work and study.

Over 90% are pleased with the library's "user-friendly" access tools, including the website, that helps them locate information on their own.

Those who use interlibrary loan feel that the turnaround time is adequate.

Forty-two percent are willing to pay modest fee to offset copier and print charges.

Over 90% of all student respondents use the library's electronic resources while 76% use books, 74% use periodicals.

Library Survey
iPod Shuffle WINNER!



Thank you Brittani Leathern for completing the library survey and congratulations on winning your iPod Shuffle!

Library Brownbag Book Club



Join us as we meet to discuss the book by Elie Wiesel, "Night."

Date: Monday Oct. 29th

Time: 12:00 noon

Location:

Library Conference
Room 122

Information Literacy

In March 2007, the Wilmington College Faculty Senate voted to include Information Literacy as a program competency at the undergraduate level and a graduation competency at the graduate level. A rubric, available to all academic departments, was designed to measure outcomes. What this means is that all students in all majors will be evaluated on ability to:

- Access, use, and evaluate information effectively and appropriately.
- Use technology to effectively locate and communicate information.

At the Program level, specific competencies include:

- Information Literacy as related to one's academic discipline.
- Ethics as related to one's academic discipline.
- Three or four additional program competencies as determined by the academic division.



Access Library Databases Through WebCampus

Both students and faculty now have access privileges to all Library databases through WebCampus, the Wilmington University portal. Simply log in to WebCampus using your User Name and Password. Once you have logged in, scroll down and on the left side you will see a link to "Library Databases." This link guides you to the full array of Library research databases available to you through Wilmington University.



Group Study Space

In a 1916 article entitled "Some Phases of Library-Study-Room Management", (Hannah Logasa, The School Review, Vol. 24, No. 5 (May, 1916), pp. 352-358), the author wrote, "Books are the tools necessary to enable teachers and pupils to clear up hazy points... Library facilities are necessary to make study a profitable part of school work, to make supervised study effective."

Trends in higher education indicate that students are increasingly assigned to work in teams to complete projects and assignments. Almost three-quarters of our student survey respondents supported an increase in group study space. The Library now has an additional group study room for students and faculty bringing the total library group-study rooms to three.

Priority is for Wilmington University student/faculty study groups on a first-come, first-serve basis. Individuals are welcome to make use of these rooms but should relinquish the room for groups. Student study groups value quiet isolated spaces to help them avoid distraction in the library. Please let us know how we can assist you in this effort.



Using WorldCat

WorldCat.org is the world's largest combined library catalog, listing over 1 billion items in 10,000 libraries, including most of the materials in the Wilmington University Library. Also included are 30 million journal and magazine article citations from the ArticleFirst, ERIC (education), and Medline databases. WorldCat.org shows which nearby libraries own a particular item, and lets you generate or export citations, add your

own notes or reviews, and save items in personalized lists. Though WorldCat.org is not a complete catalog of all libraries, it is the largest database of its kind in the world with over 1 billion items. There is another WorldCat, however. The library also offers WorldCat on FirstSearch, which has a different interface and additional search capabilities, and does not automatically include journal article citations. That version is licensed for use

by Wilmington University students, faculty, and staff, and is available to anyone visiting our libraries.



Library Policy on Food & Drink

The Library has a policy prohibiting food and drink. Here are some reasons why.*

Food and drink attract vermin.

Where there is food, rodents and insects follow. Empty paper cups, soda cans, and candy wrappers attract pests. These pests literally chew up books, or discolor, stain and loosen pages, and destroy bindings.

Mold is death (for books).

No matter how careful you are accidents can occur. Spills can cause stains, but more importantly moisture is a breeding ground for molds and mildews. Fungal growth is highly contagious; one wet book can seed mildew growth through an entire collection.

Cleanup is costly.

Stains that have set take extra effort and time to remove. The Library and custodial staff help keep trash under control but library users must do their part.

What can I do?

Consume all food and drinks before entering the Library. Deposit all waste in trash receptacles. Inform Library staff if you see a spill so it can be cleaned quickly. Help explain to others about the reasons for the food and drink policy.

*Adapted from University of California Library.

Interlibrary Loan & Ariel

The Wilmington University Library offers a borrowing service called Interlibrary Loan (ILL). Materials not owned by the Library or unavailable electronically can be obtained through Interlibrary Loan. Use of this service is limited to Wilmington University students, faculty, and staff. Books can be either picked up in the library or mailed to the patron's home. Articles requested can be picked up in the library, mailed home or electronically delivered through a new system called Ariel. When requesting an article through Interlibrary Loan, simply use the "Web Delivery" option on the ILL form. When the material arrives, (often within 24 hours), you will receive an email with a link and pin number. Use this information to access your article. For further information on Interlibrary Loan please visit the Library homepage.

Requests can be made online or by calling the 800 line.

1-800-451-5724

<http://www.wilmu.edu/library/illrequest.html>

Wilmington University Library

1-800-451-5724

www.wilmu.edu/library

New Castle Main Library (302) 356-6879

Wilson Graduate Center Resource Room
(302) 295-1177

Dover Library Center (302) 734-2594

Betze Library Georgetown (302) 856-9033

Newsletter Staff

Jim McCloskey, Director	Adrienne Johnson
Kailah Neal	Barbara Beard
Pam Shukitt	

Hours & Locations

New Castle Main Library

Monday-Thursday
9:00am- 10:00pm

Friday 9:00am- 8:00pm

Saturday 9:00am- 5:00pm

Sunday 1:00pm- 8:00pm

Dover Library Center

Monday-Thursday
4:30pm- 7:30pm
(Additional hours available
by appointment)

Wilson Graduate Center Resource Room

Monday-Thursday
4:30pm- 7:30pm
(Additional hours available
by appointment)

Stephen J. Betze Library Georgetown

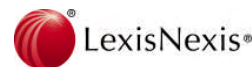
Monday-Thursday
8:00am- 10:00pm

Friday 8:00am- 4:30pm

Saturday 9:00am- 1:00pm

Electronic Resources: Library Databases

Check out the full array of Library Databases available to you. Simply log into WebCampus and choose 'Library Databases' from the menu to gain full access to the resources.



Now and Then . . . Pictures from the Past



Above: Library computers and equipment from the former Library Building.



Above: Today's Library computers have changed enormously in features and design.

Right: The Library's first computer for searching electronic databases via CD-ROM.



In 1995 the Library underwent a major transformation. Shown on bottom is a picture of the previous Library building, what is now known as the maintenance building.

